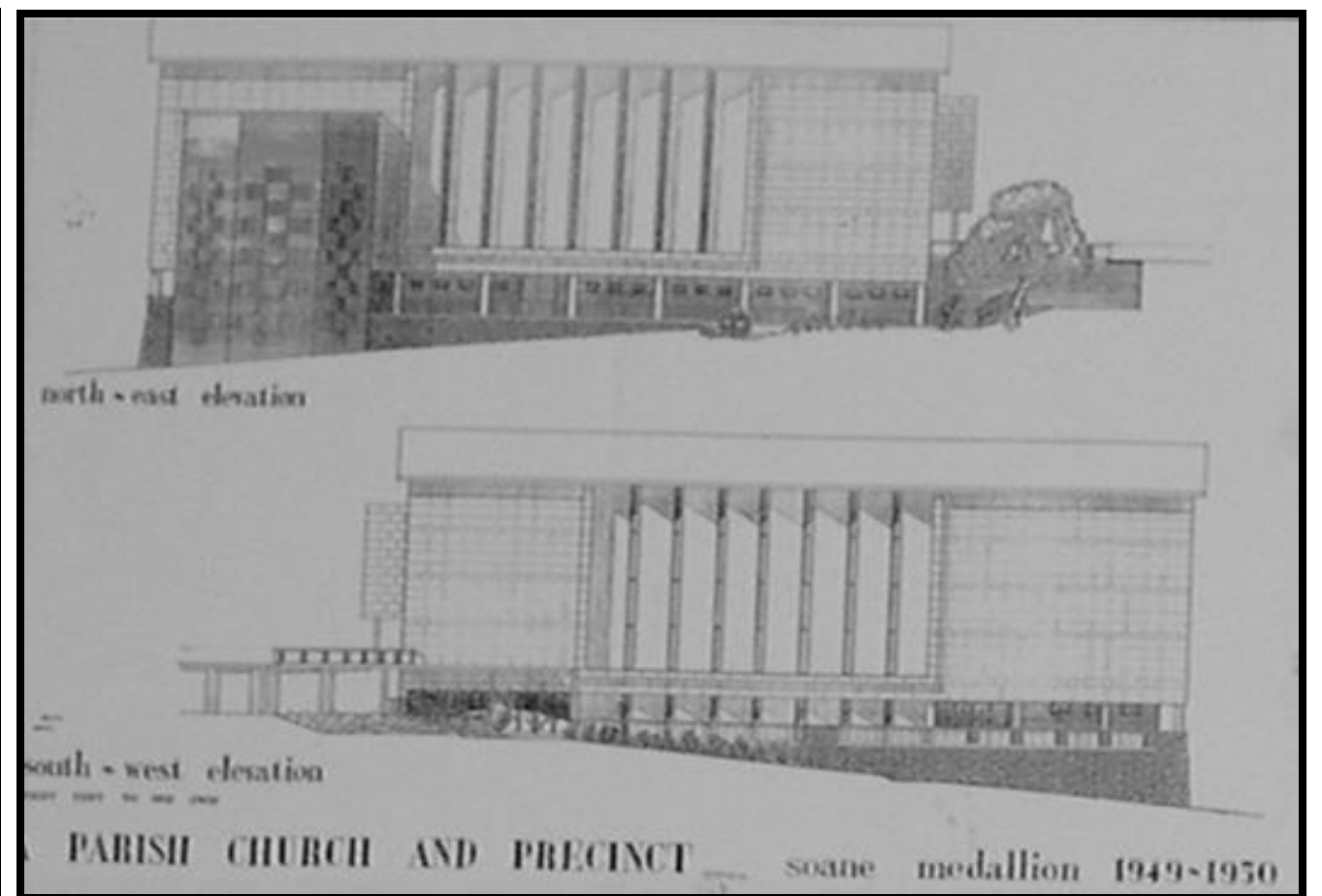
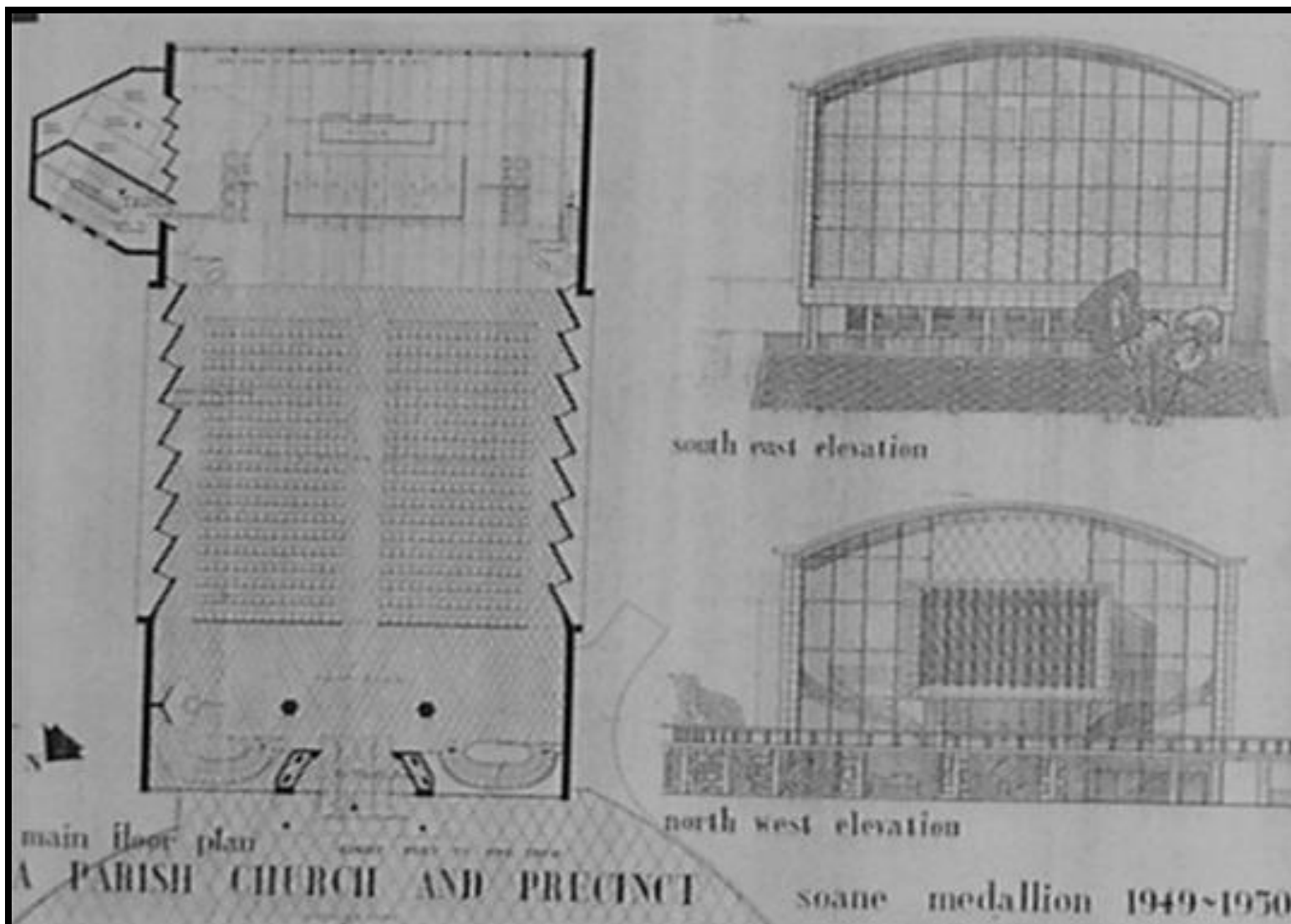
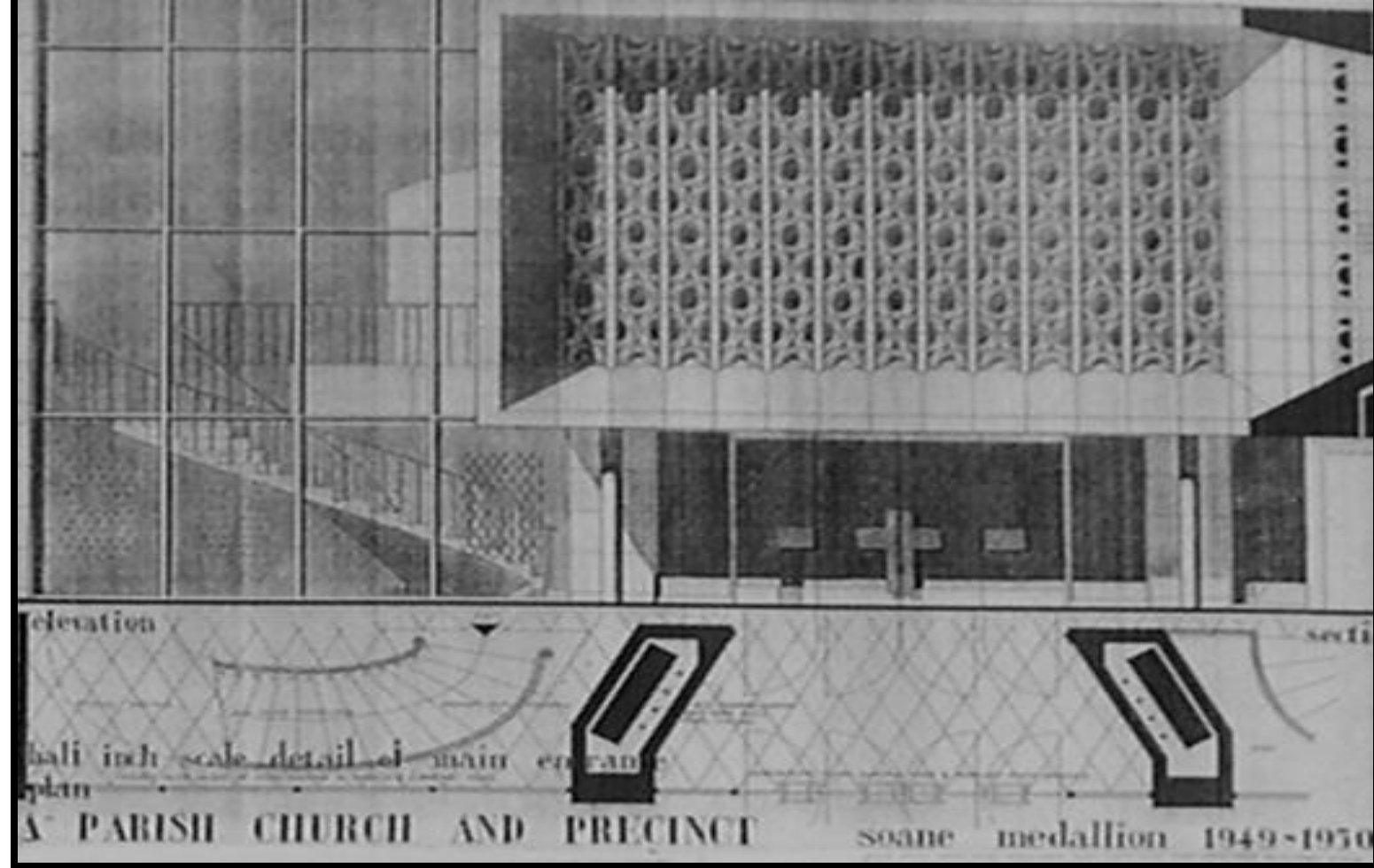
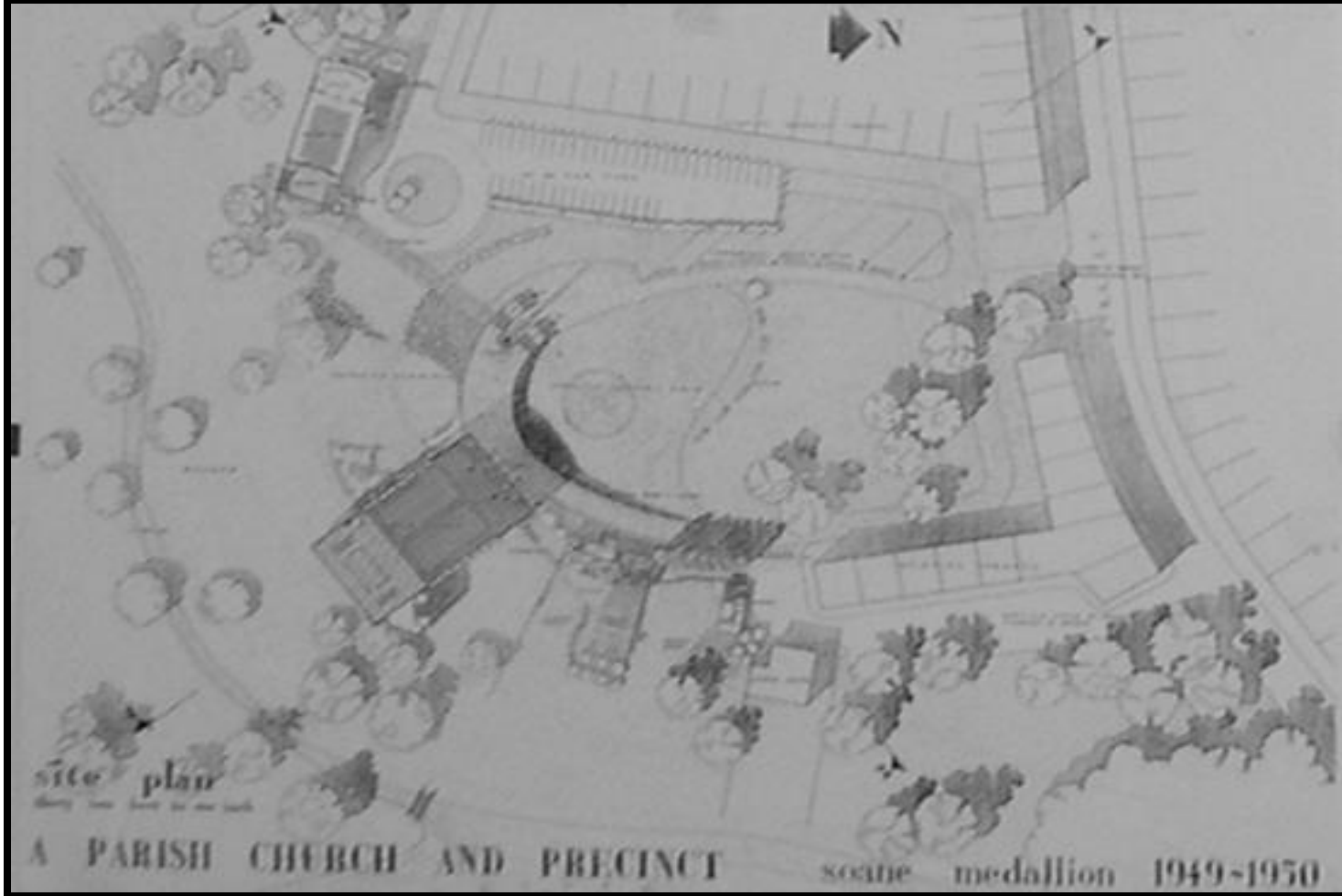


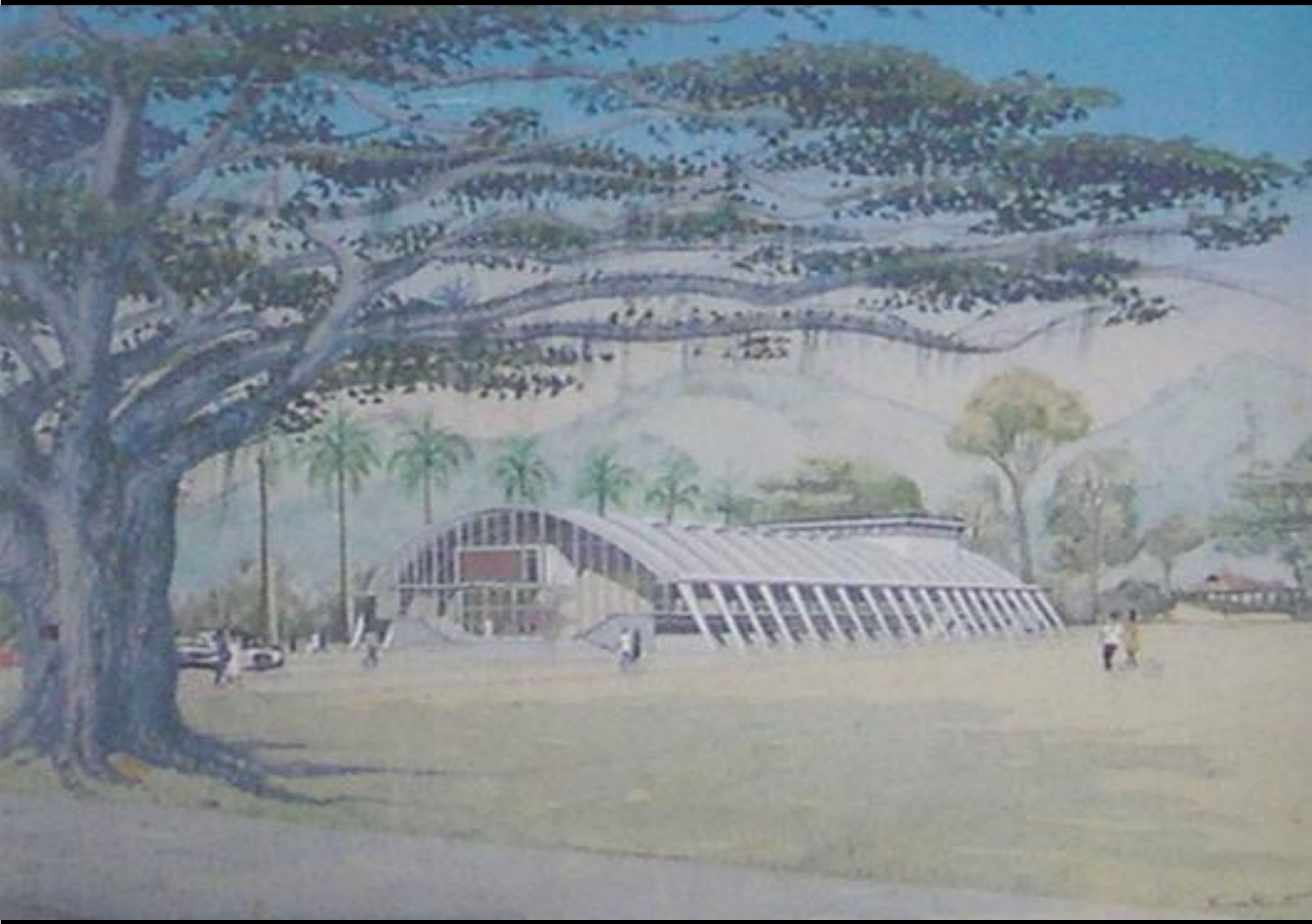
RIBA premier competition



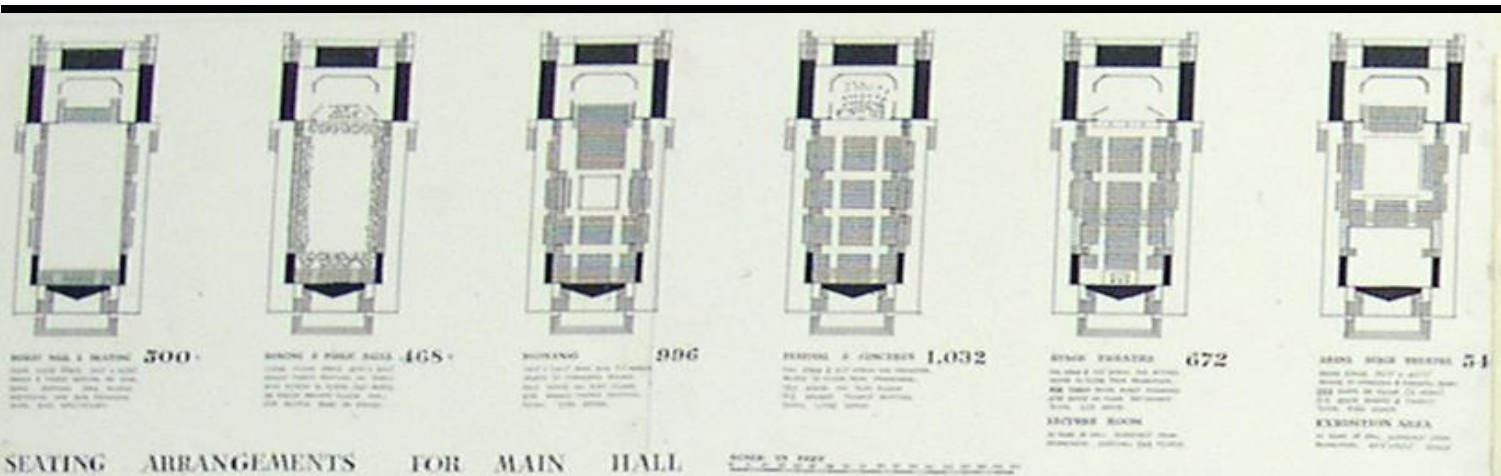
FIRST PLACE

SOANE MEDALLION 1949

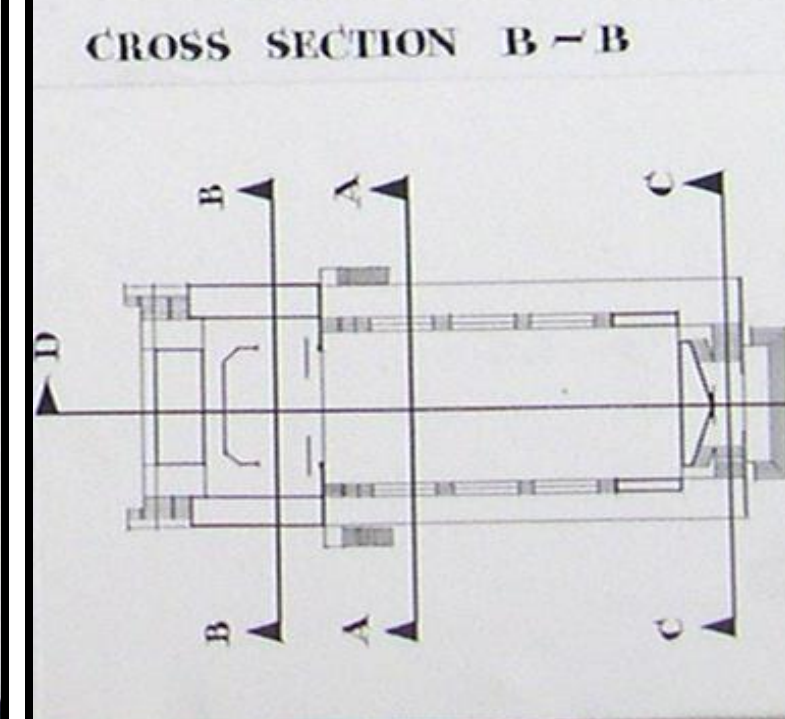
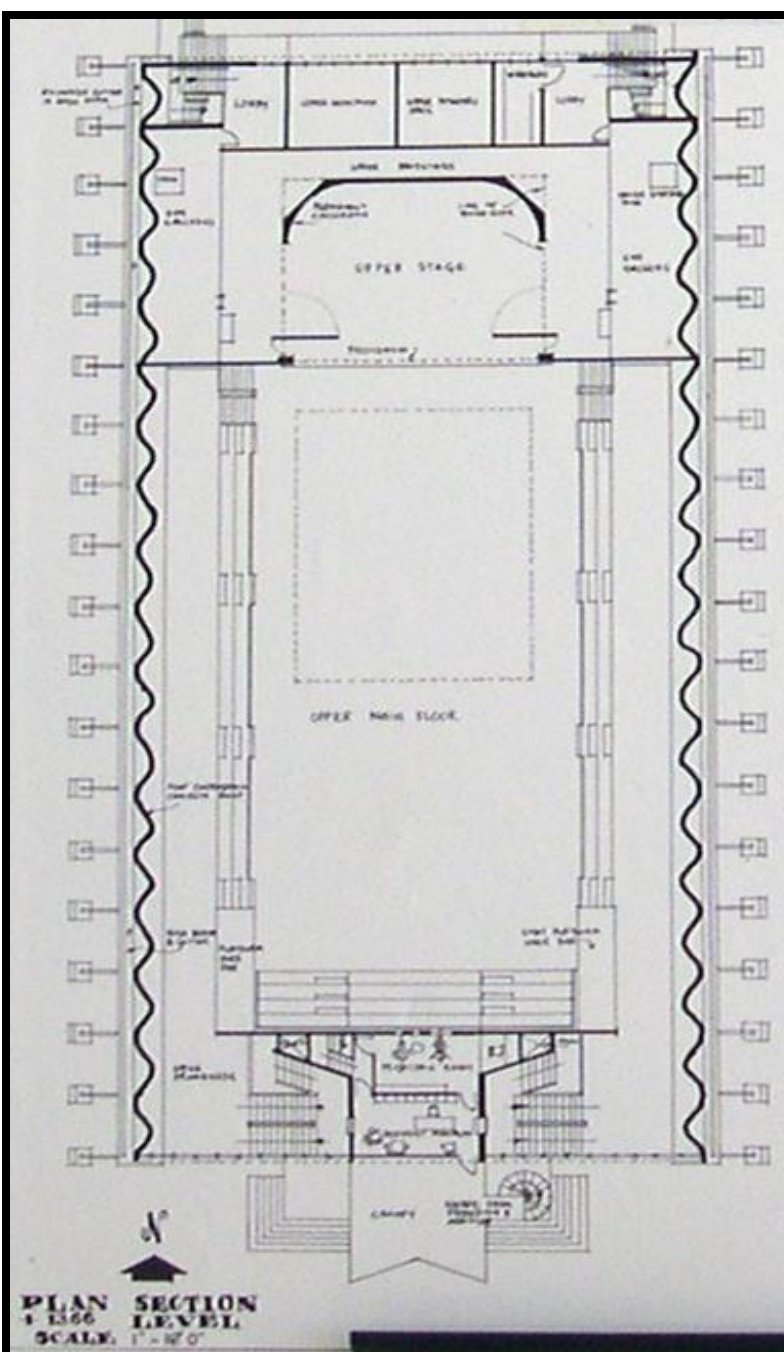
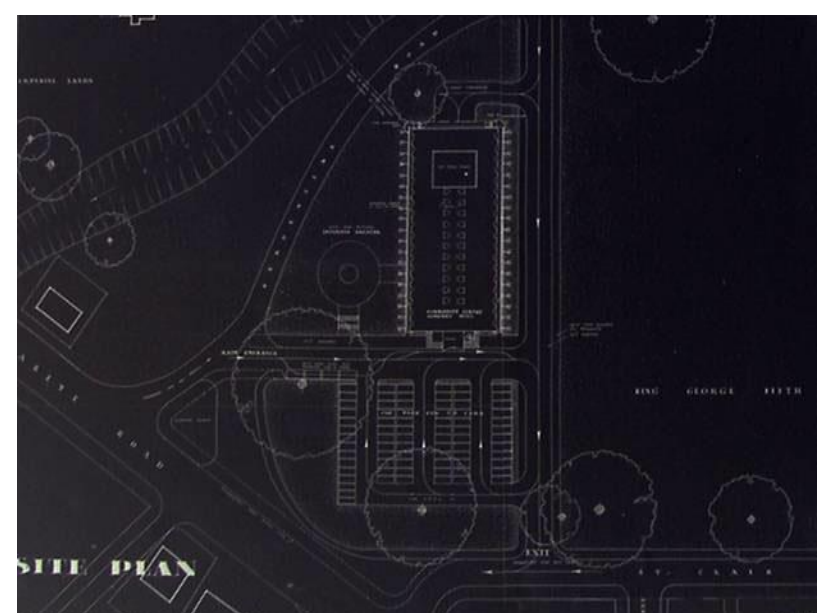
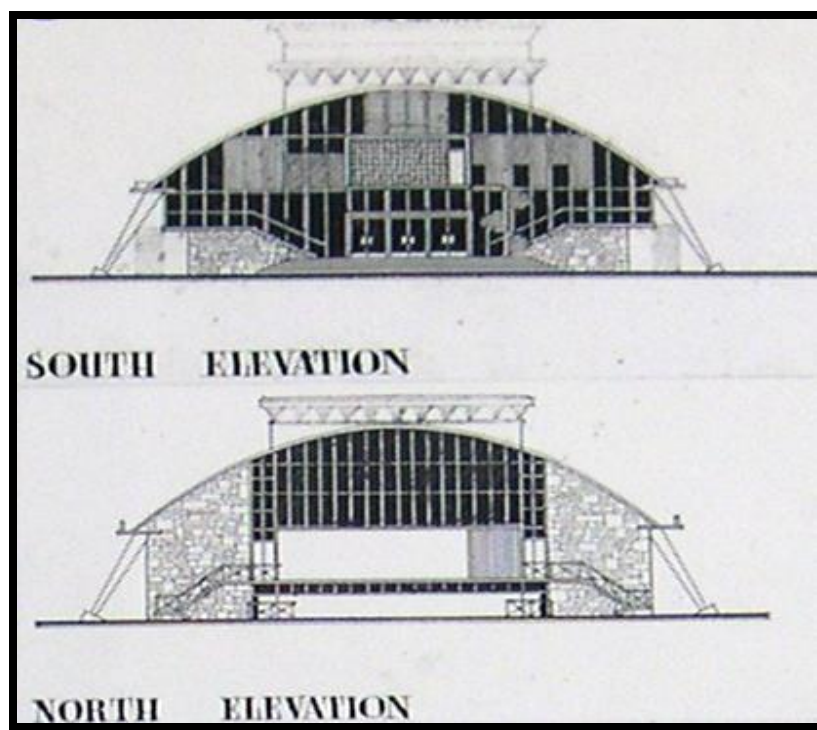
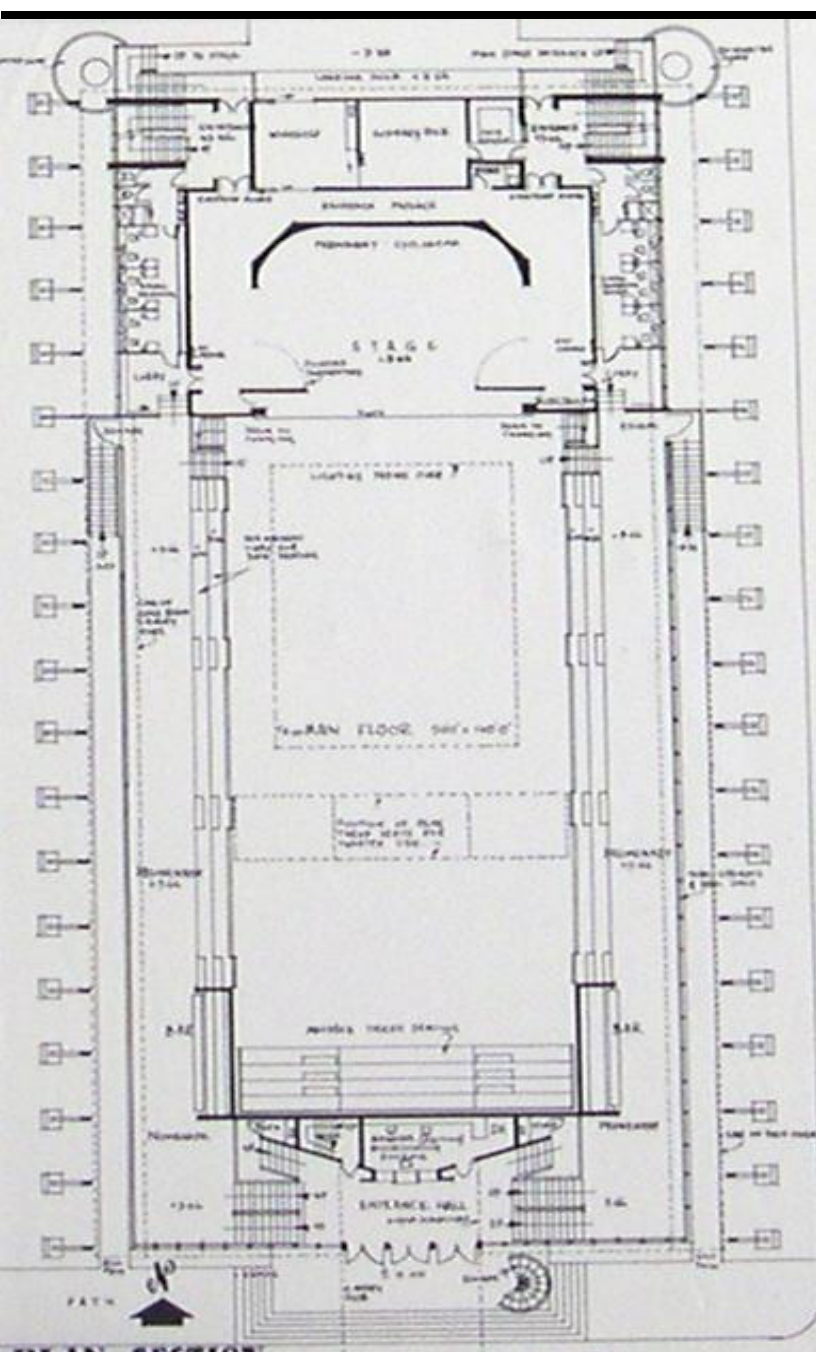
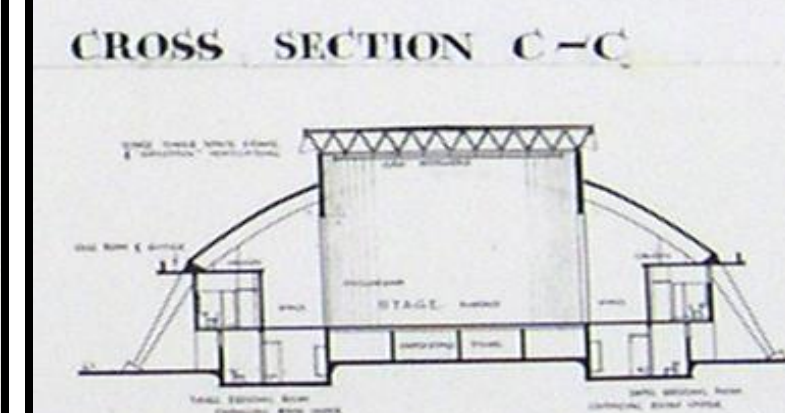
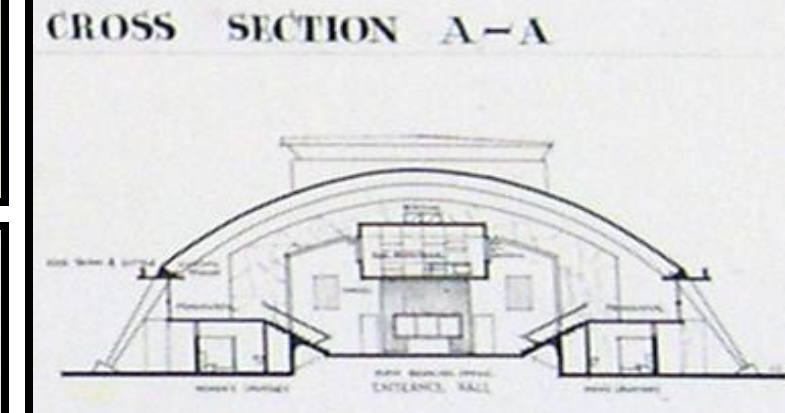
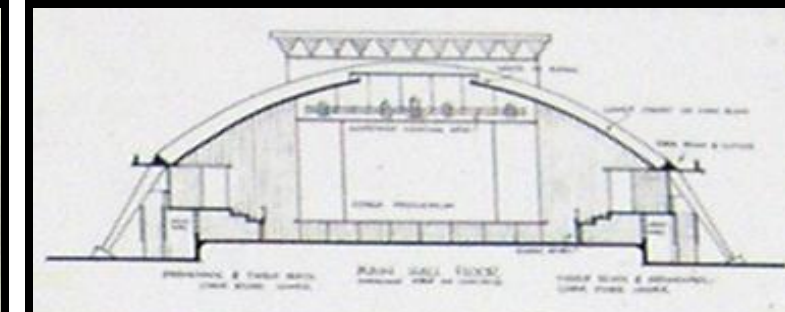
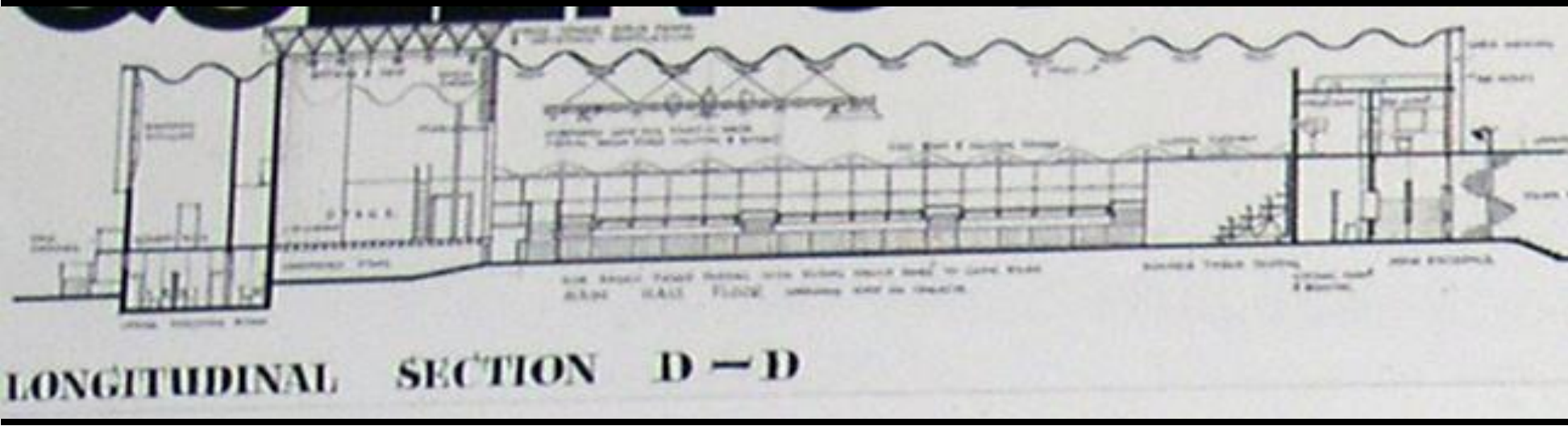
QUEEN'S HALL COMPETITION 1956



FIRST

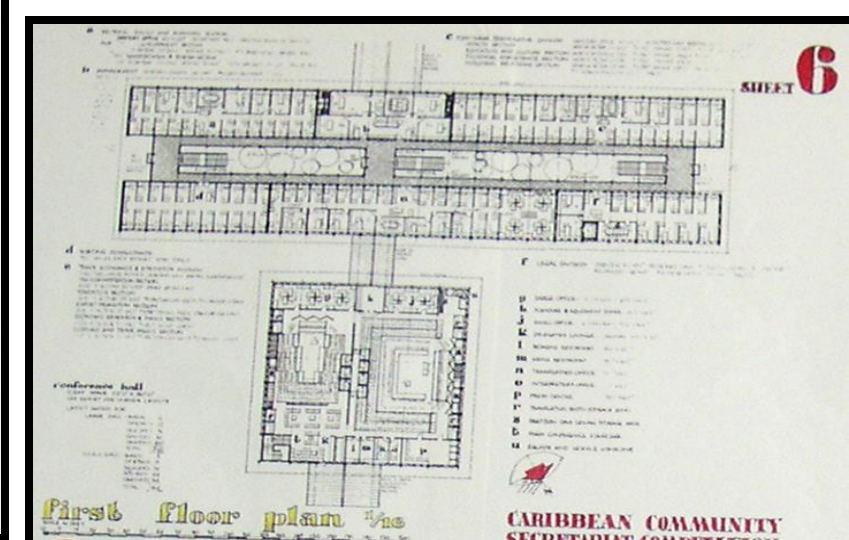
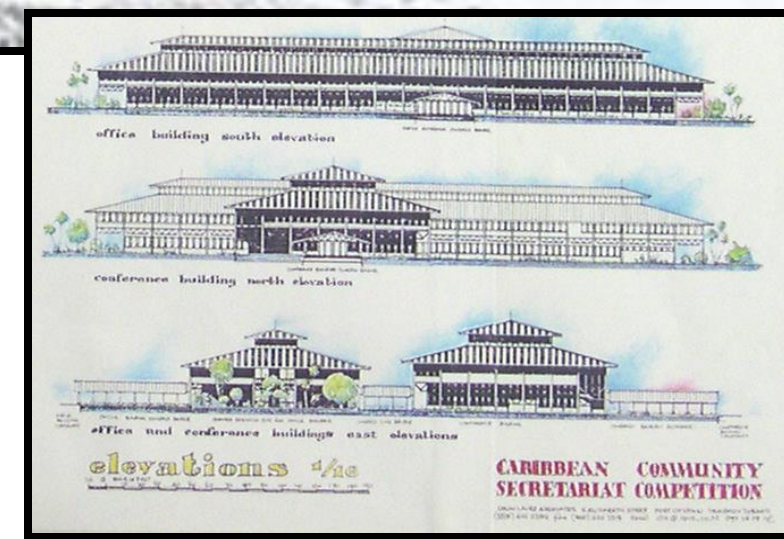
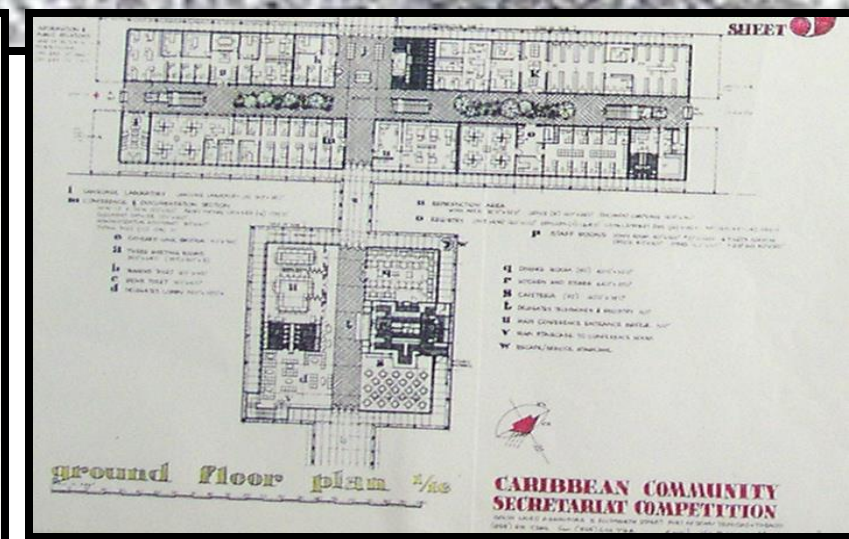


QUEEN'S HALL COMPETITION 1956

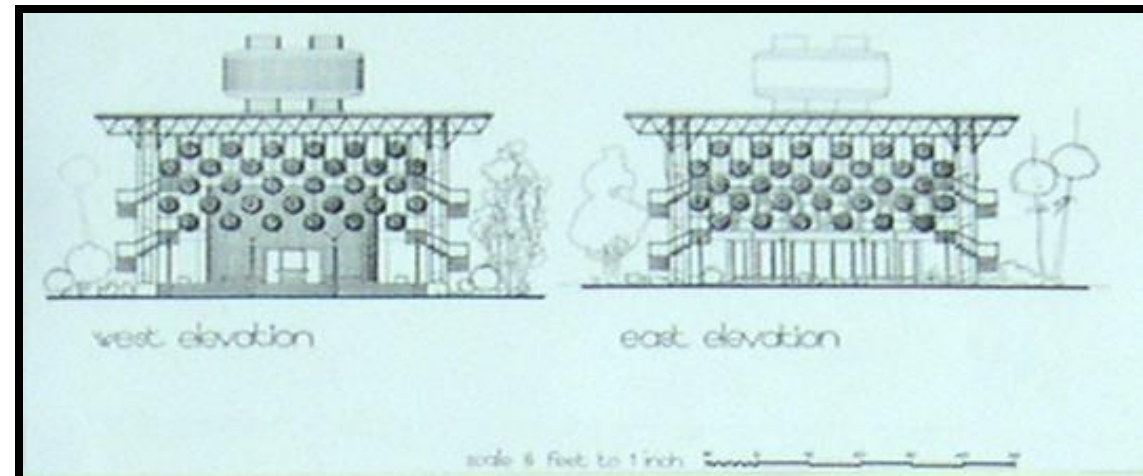
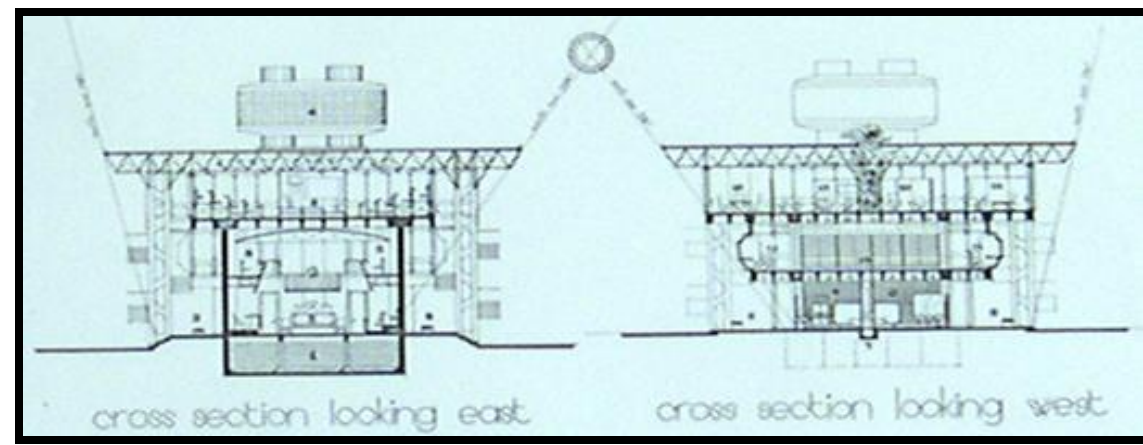
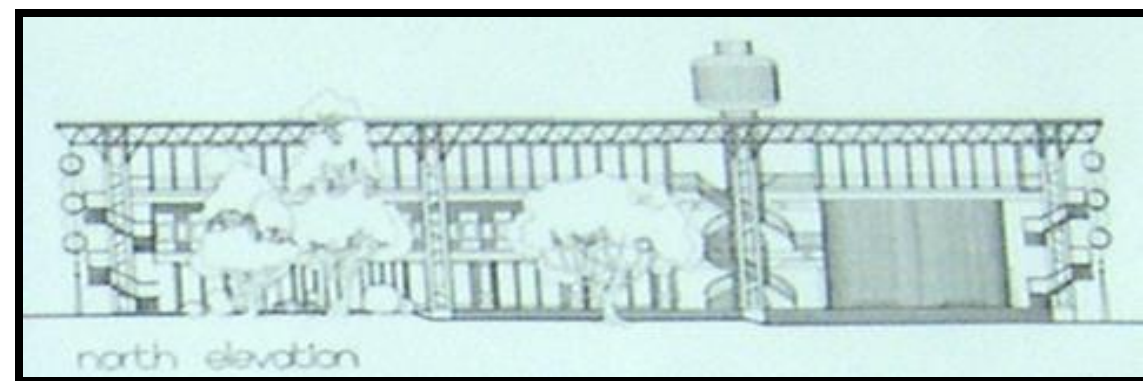
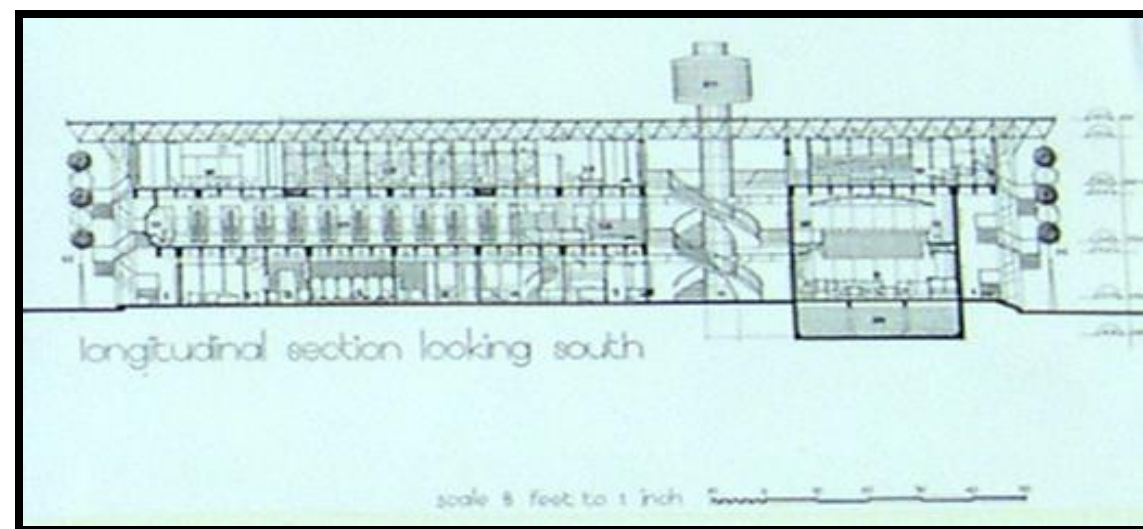
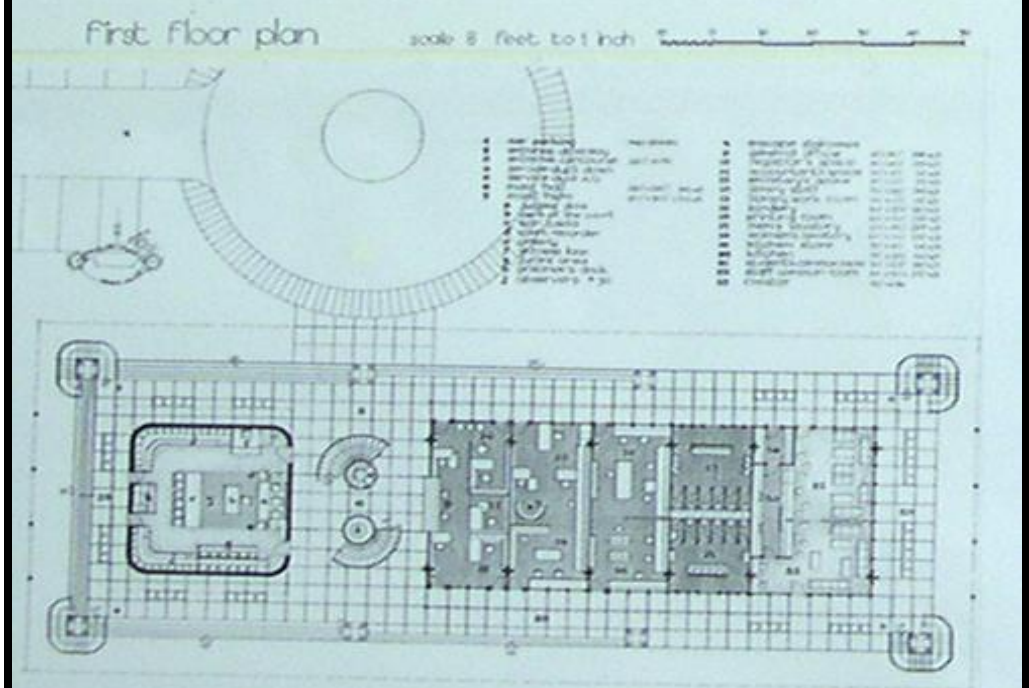
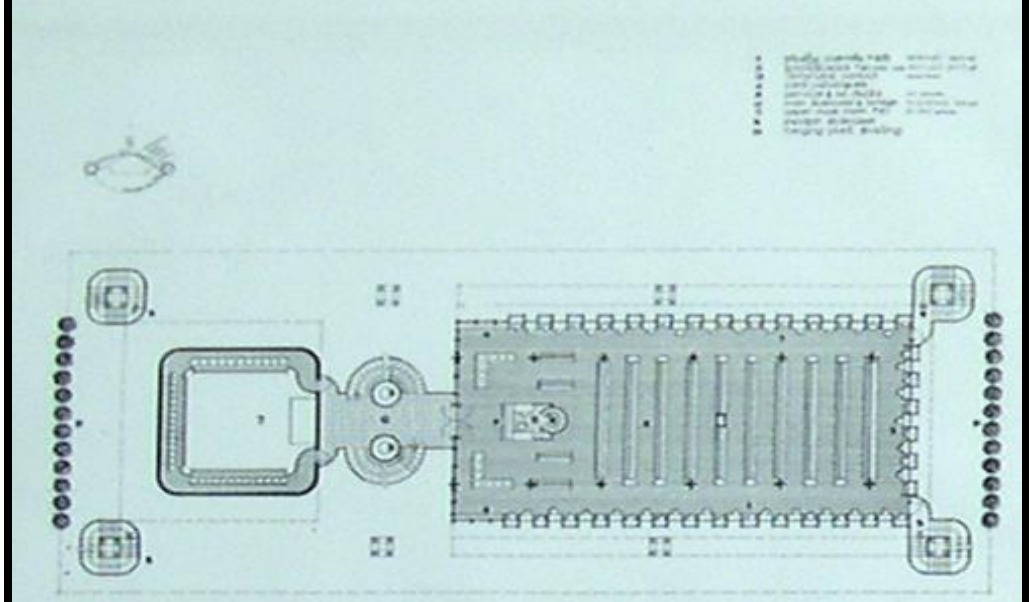
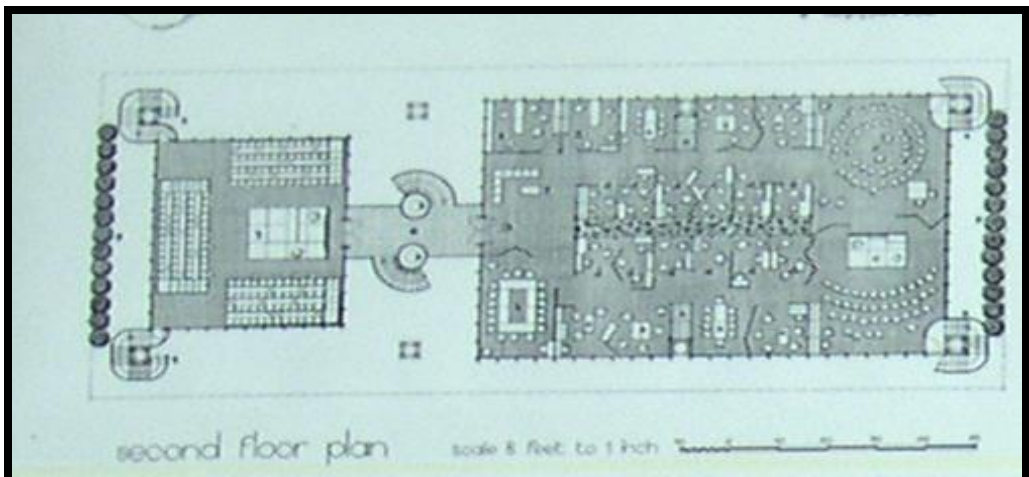
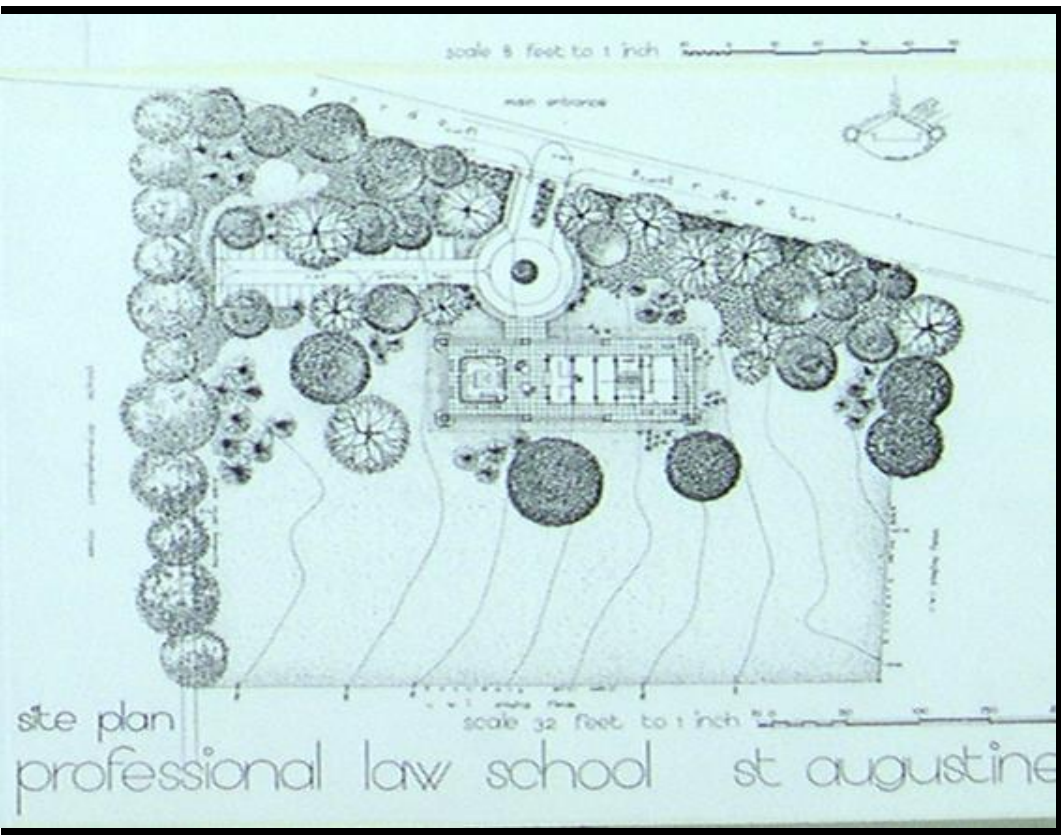


CARICOM HEADQUARTERS

1973

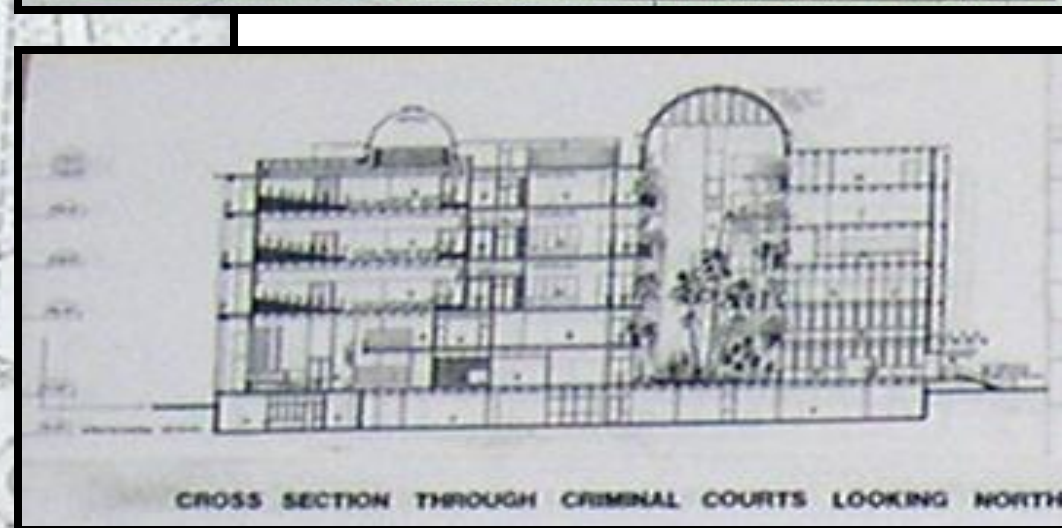
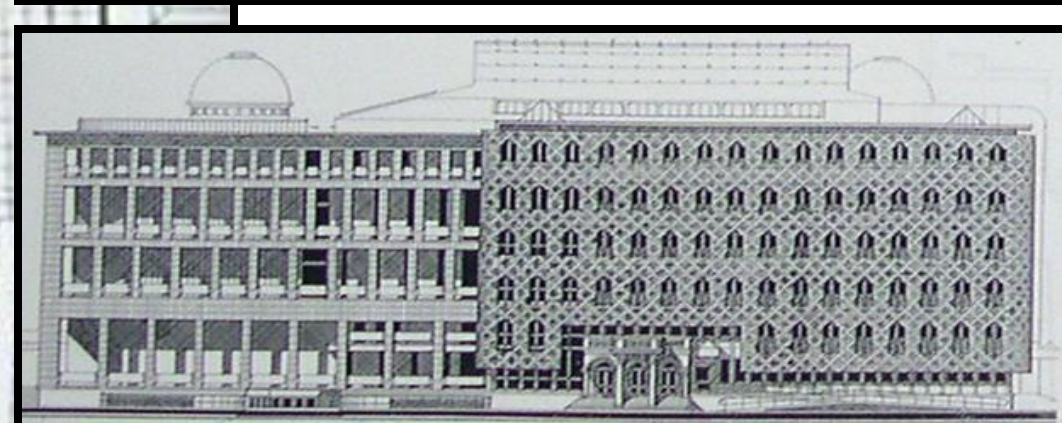
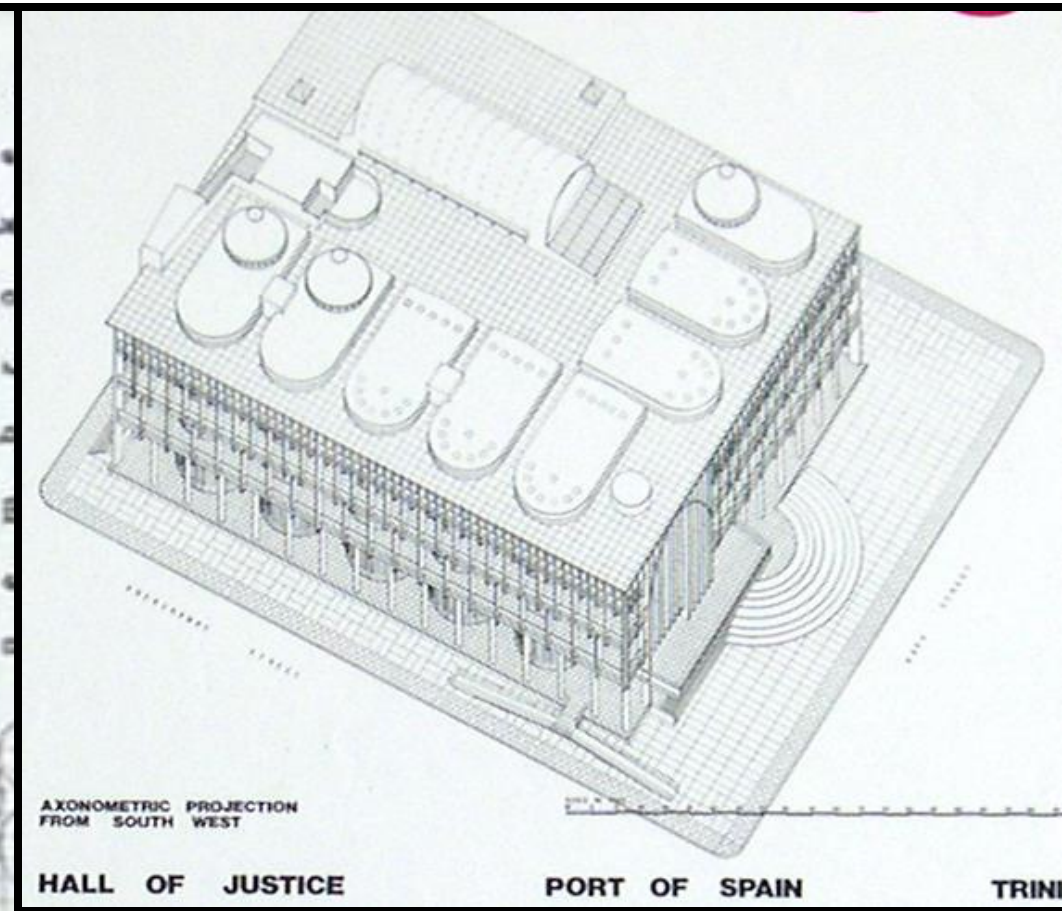
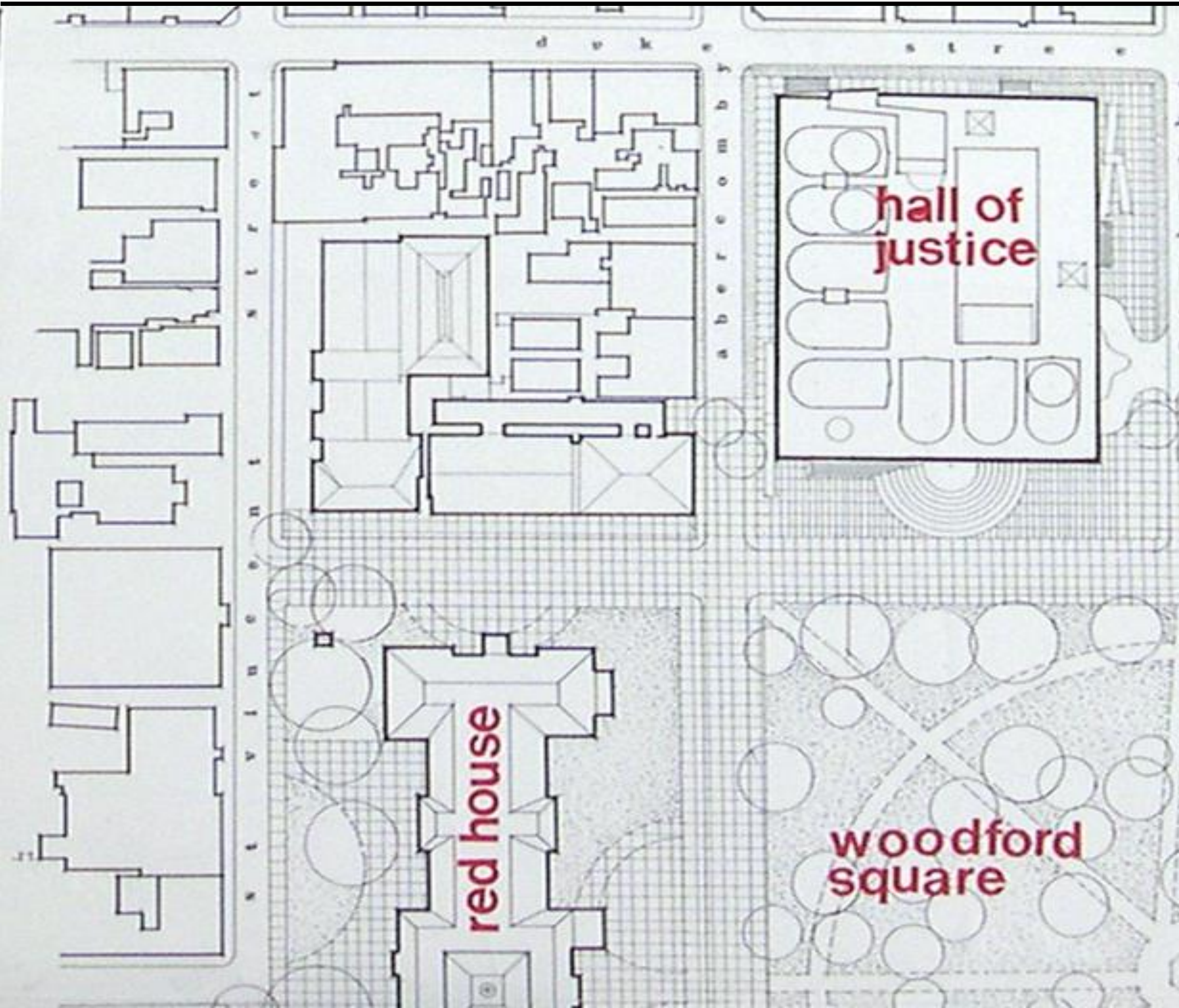


PROFESSIONAL LAW SCHOOL 1974

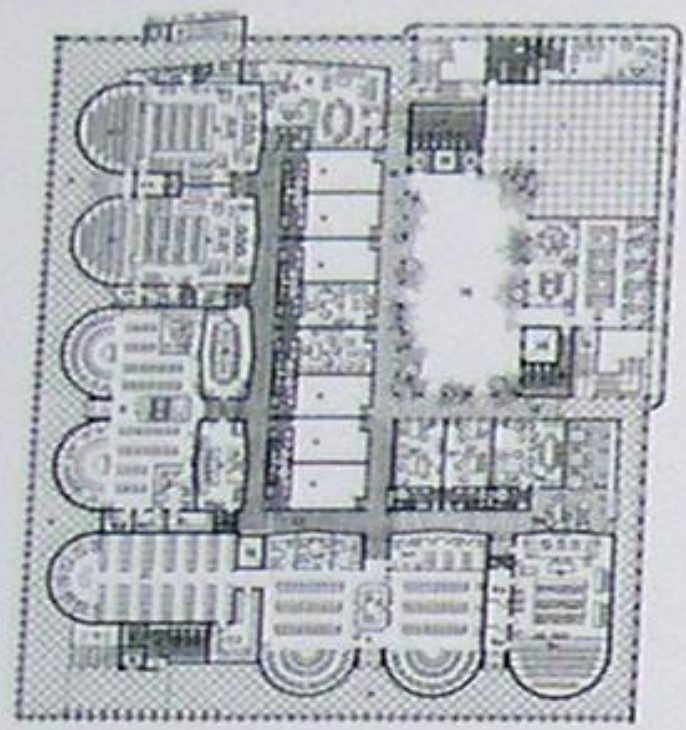


Competition
2nd

NATIONAL HALL OF JUSTICE 1980



NATIONAL HALL OF JUSTICE 1980



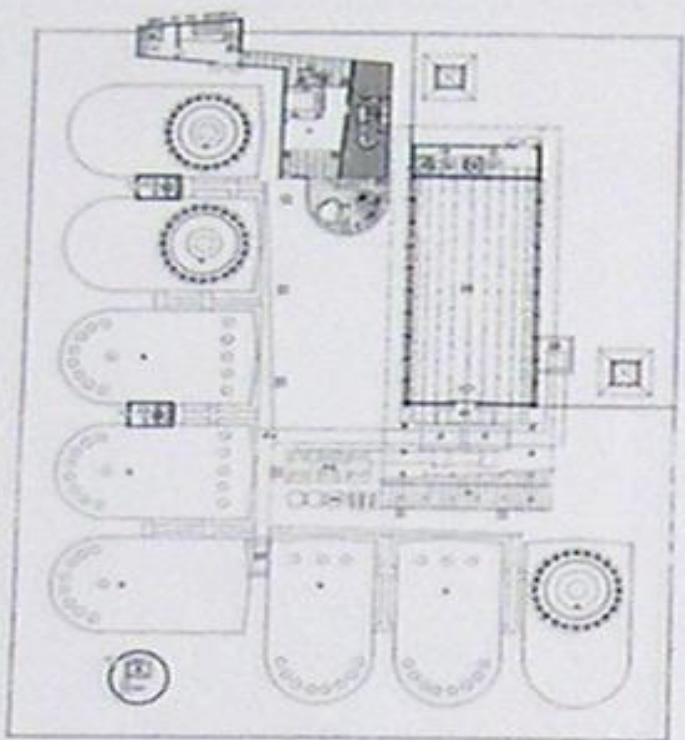
GENERAL KEY

- 1. Office
- 2. Conference Room
- 3. Reception
- 4. Corridor
- 5. Staircase
- 6. Elevator
- 7. Restroom
- 8. Storage
- 9. Mechanical Room
- 10. Utility Room
- 11. Janitor's Room
- 12. Unfinished Area

THIRD FLOOR KEY

- 1. Office
- 2. Conference Room
- 3. Reception
- 4. Corridor
- 5. Staircase
- 6. Elevator
- 7. Restroom
- 8. Storage
- 9. Mechanical Room
- 10. Utility Room
- 11. Janitor's Room
- 12. Unfinished Area

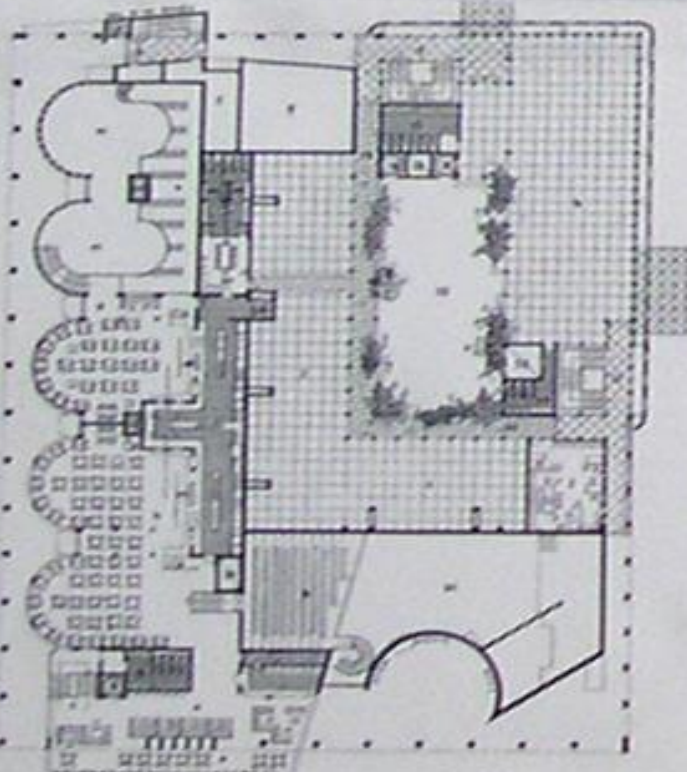
THIRD FLOOR - 56-00 & 60-00 OFFICES



ROOF KEY

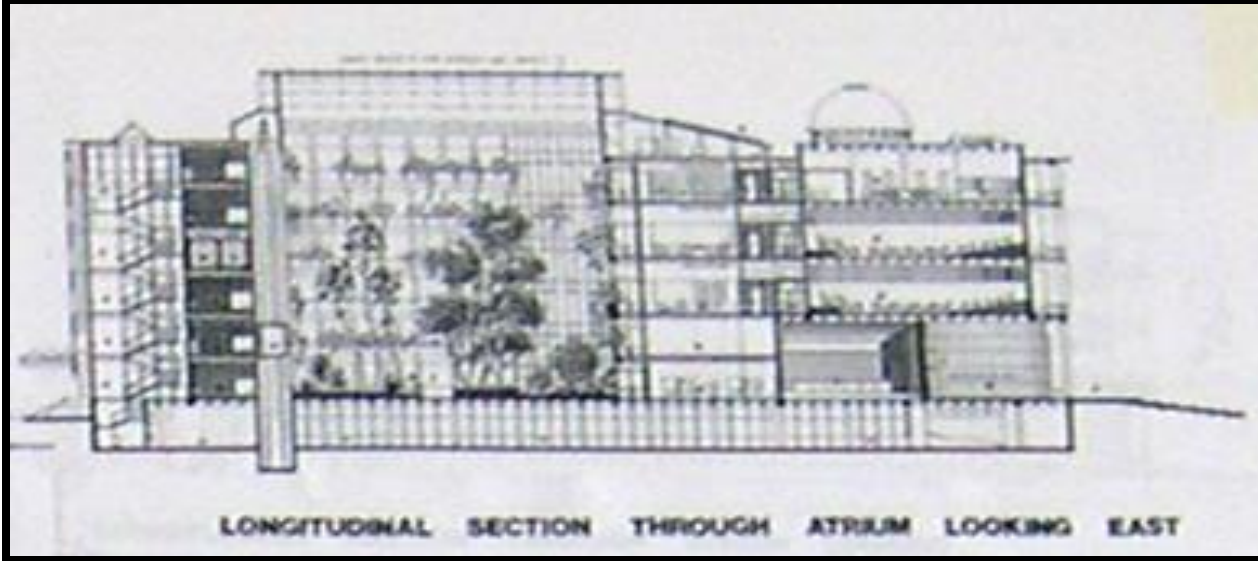
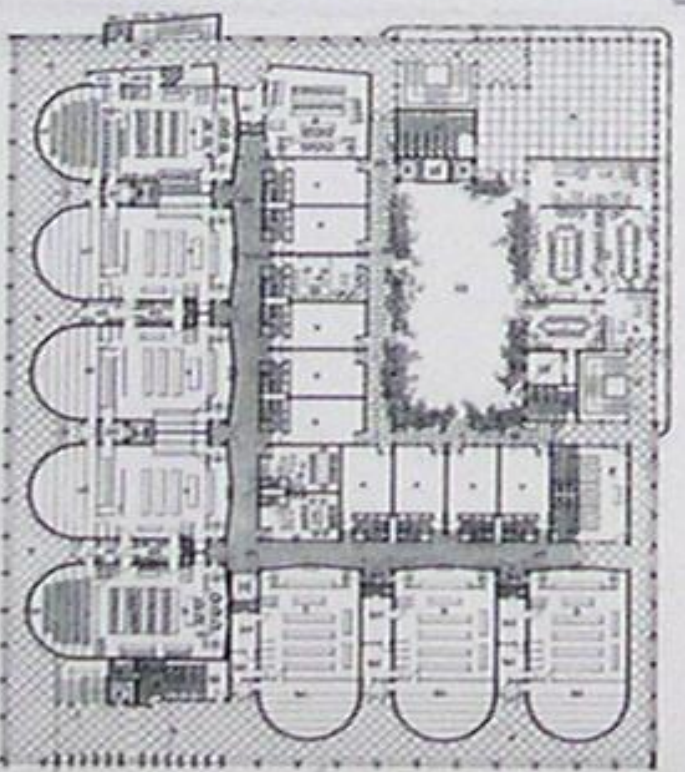
- 1. Roof Deck
- 2. Parapet Wall
- 3. Roof Drain
- 4. Mechanical Room
- 5. Utility Room
- 6. Janitor's Room
- 7. Unfinished Area

ROOF PLAN - 68-00 & 72-00

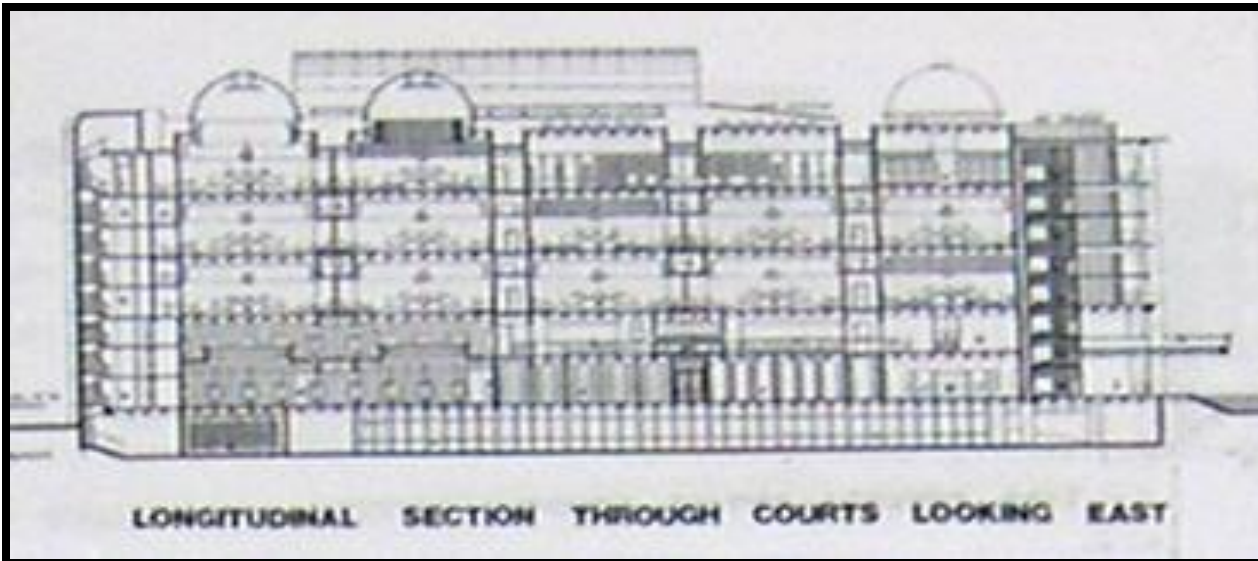


GENERAL KEY

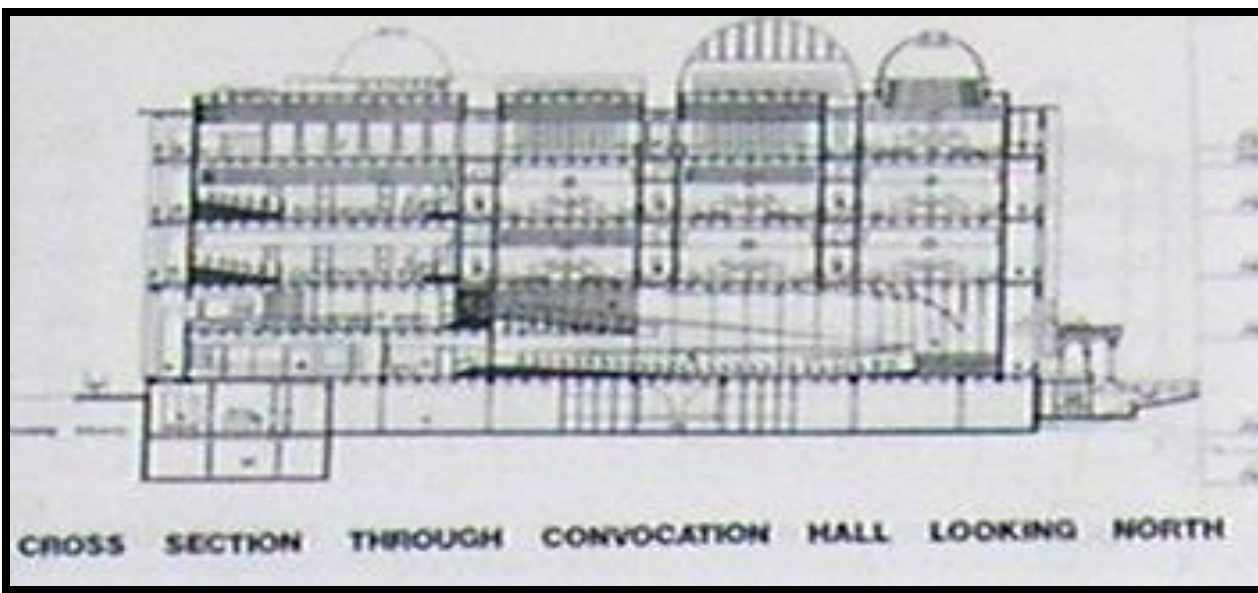
- 1. Office
- 2. Conference Room
- 3. Reception
- 4. Corridor
- 5. Staircase
- 6. Elevator
- 7. Restroom
- 8. Storage
- 9. Mechanical Room
- 10. Utility Room
- 11. Janitor's Room
- 12. Unfinished Area



LONGITUDINAL SECTION THROUGH ATRIUM LOOKING EAST

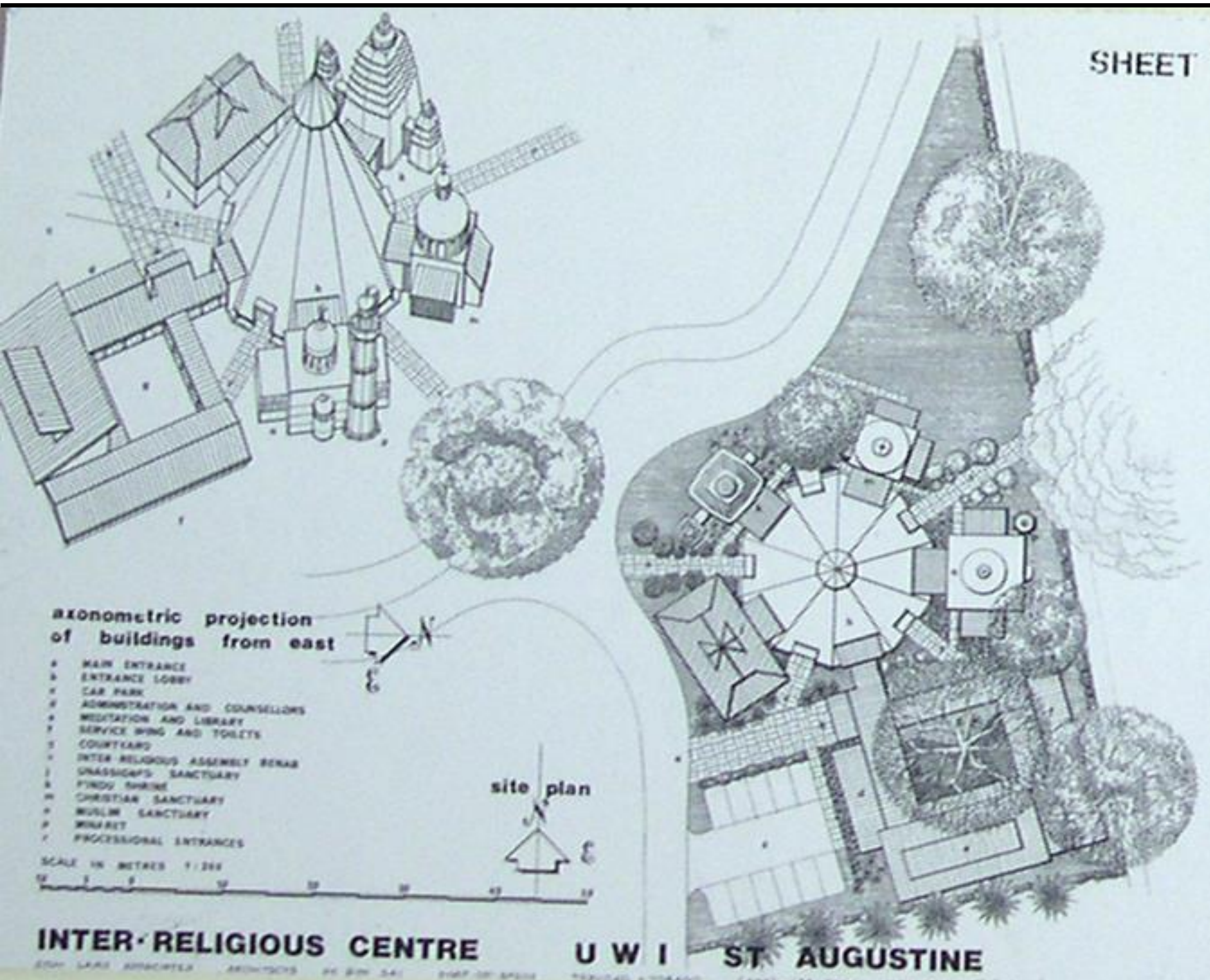


LONGITUDINAL SECTION THROUGH COURTS LOOKING EAST

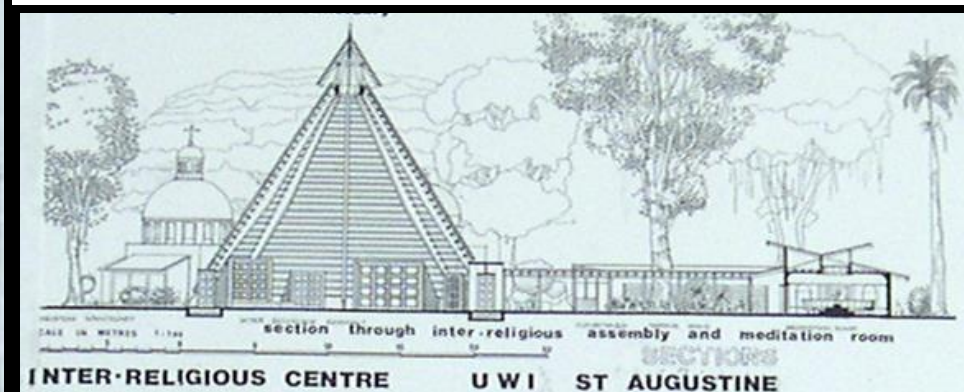
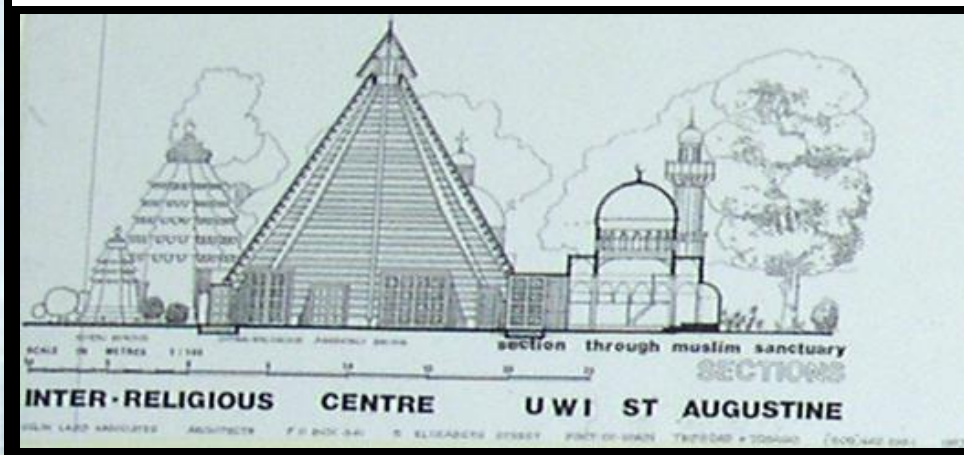
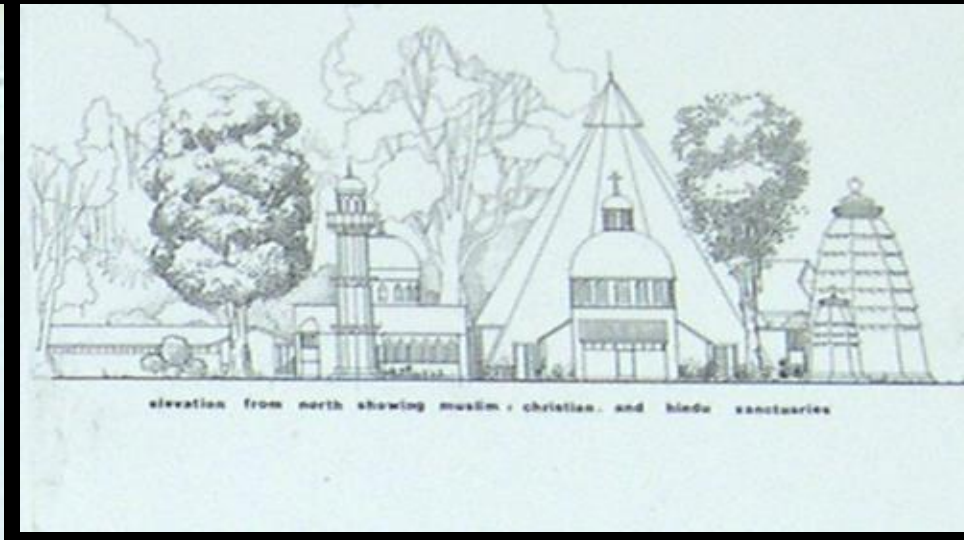


CROSS SECTION THROUGH CONVOCATION HALL LOOKING NORTH

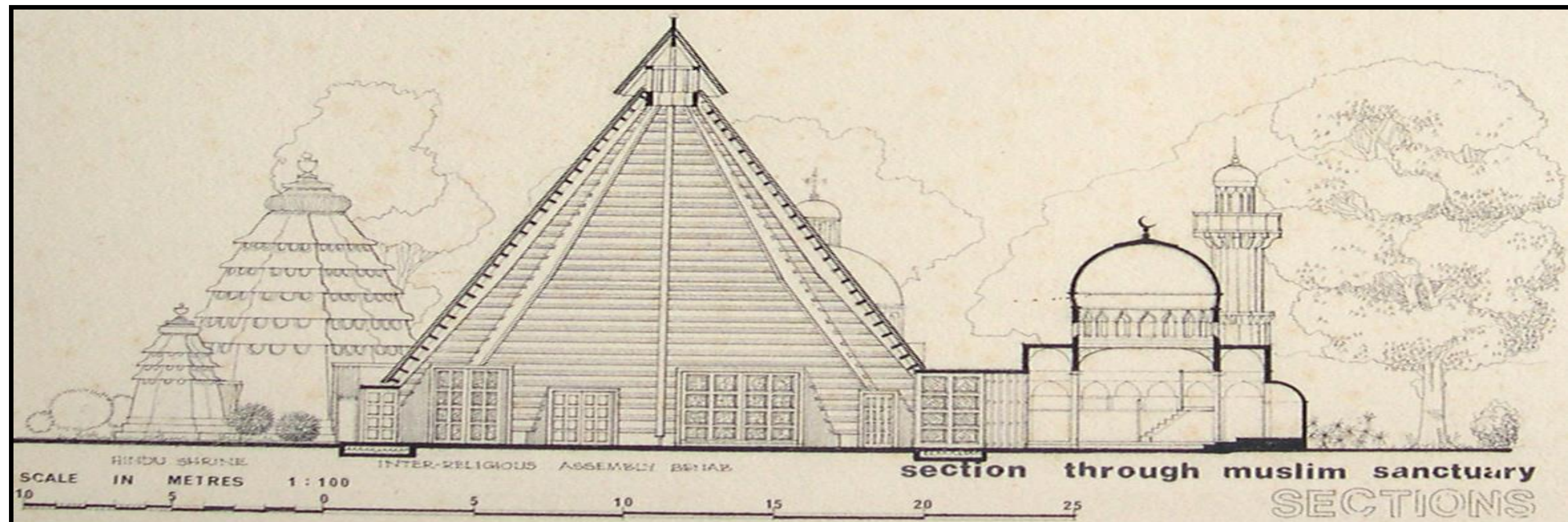
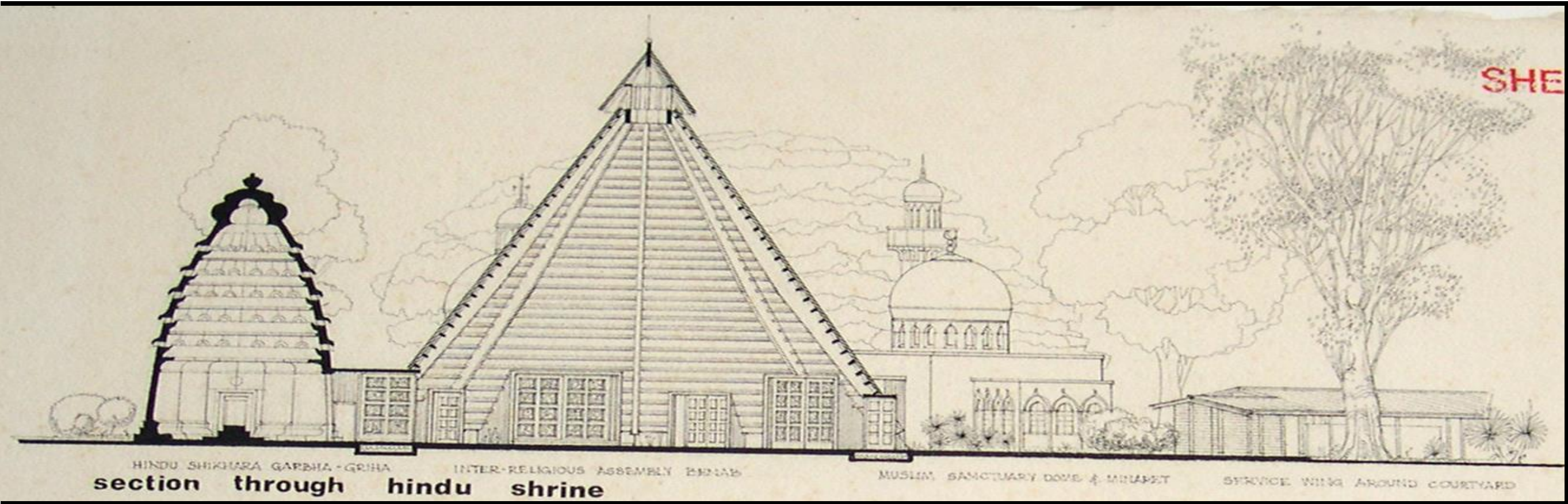
INTER-RELIGIOUS CENTRE UWI 1987



SHEET

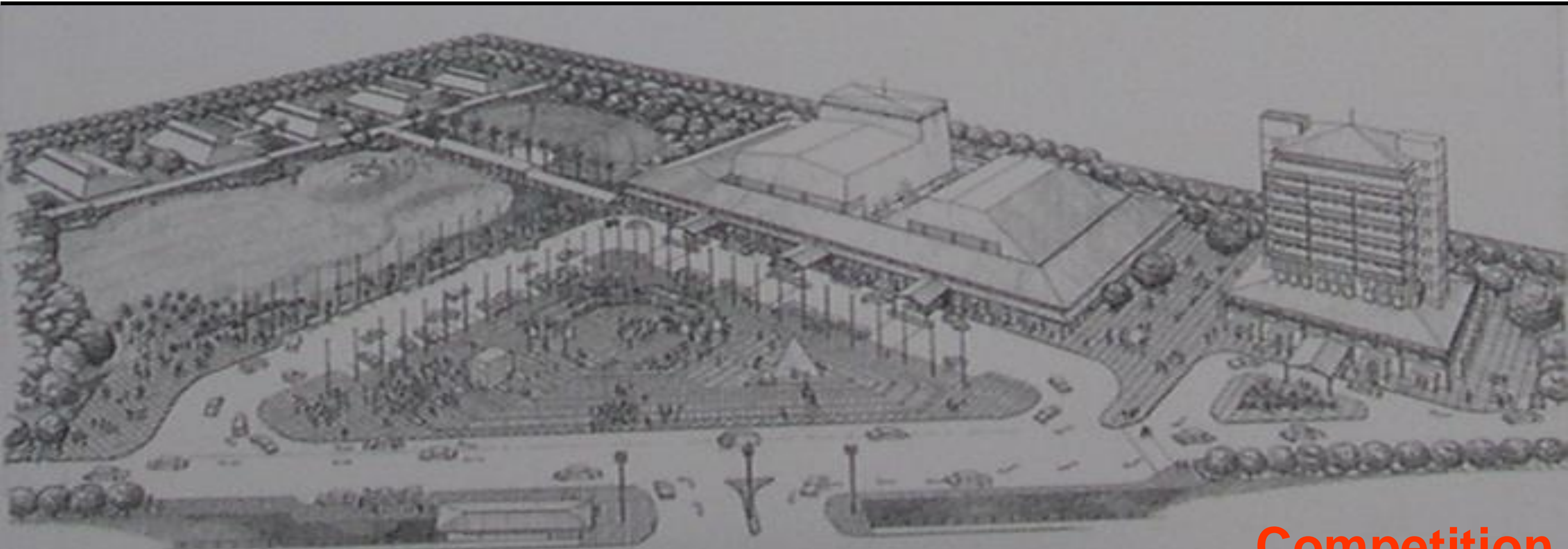
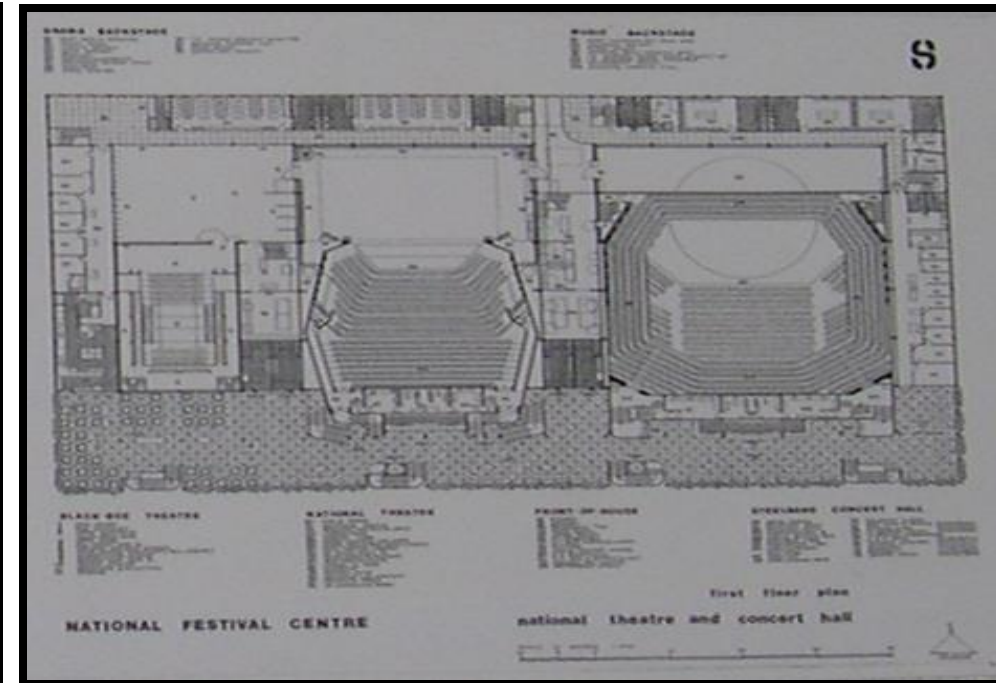
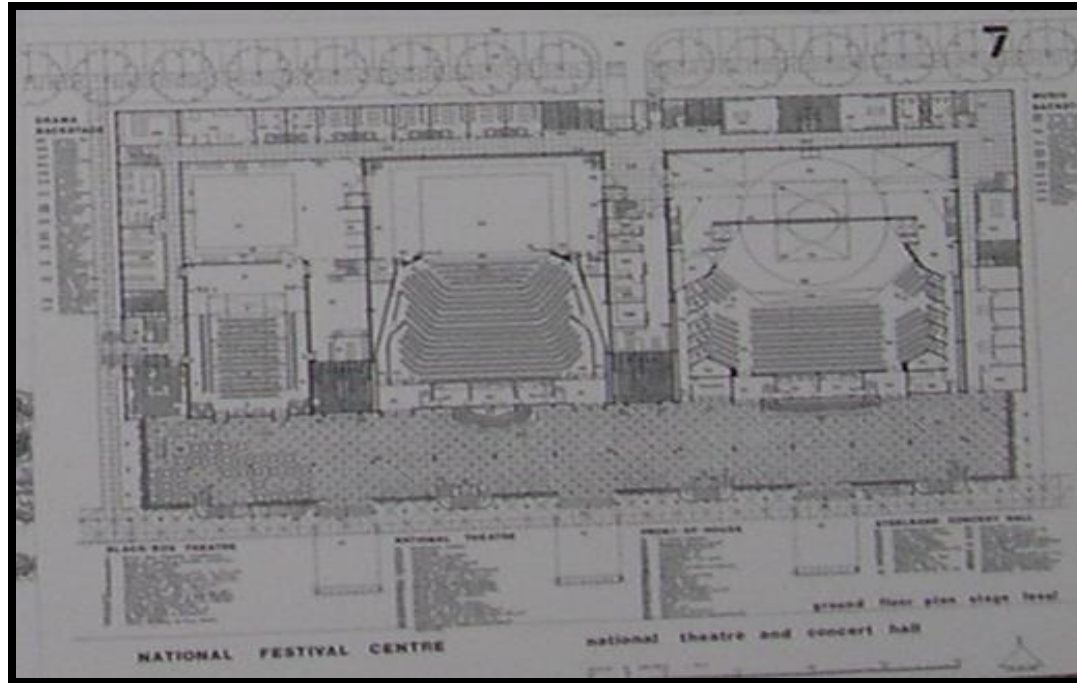
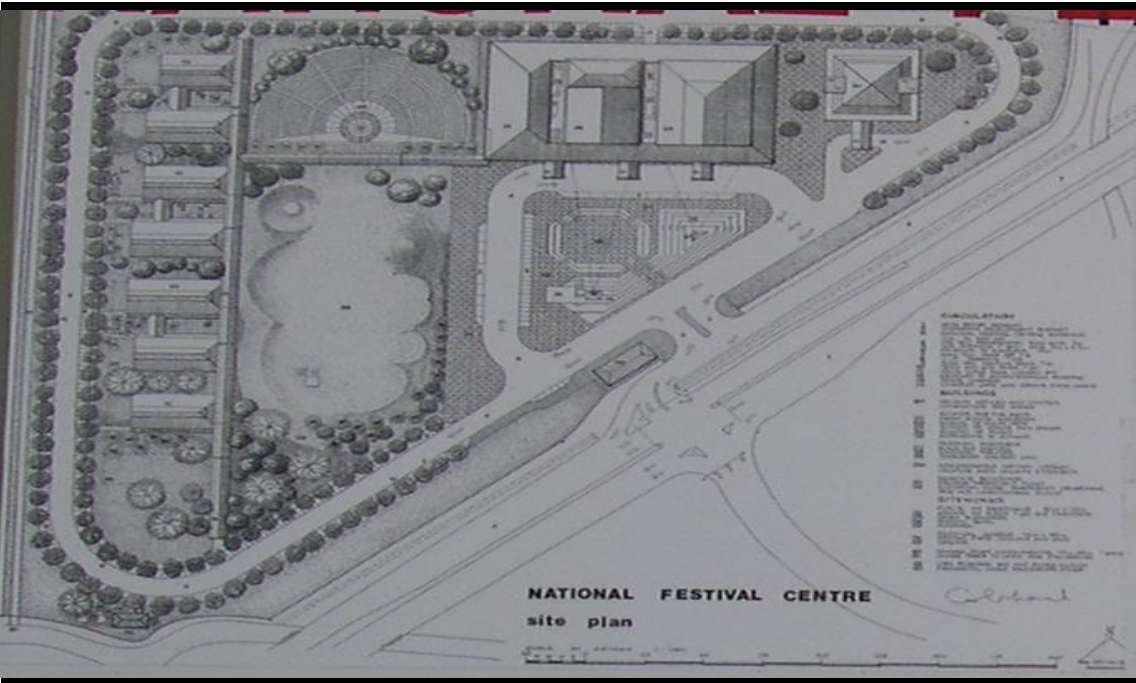


INTER-RELIGIOUS CENTRE UWI 1987



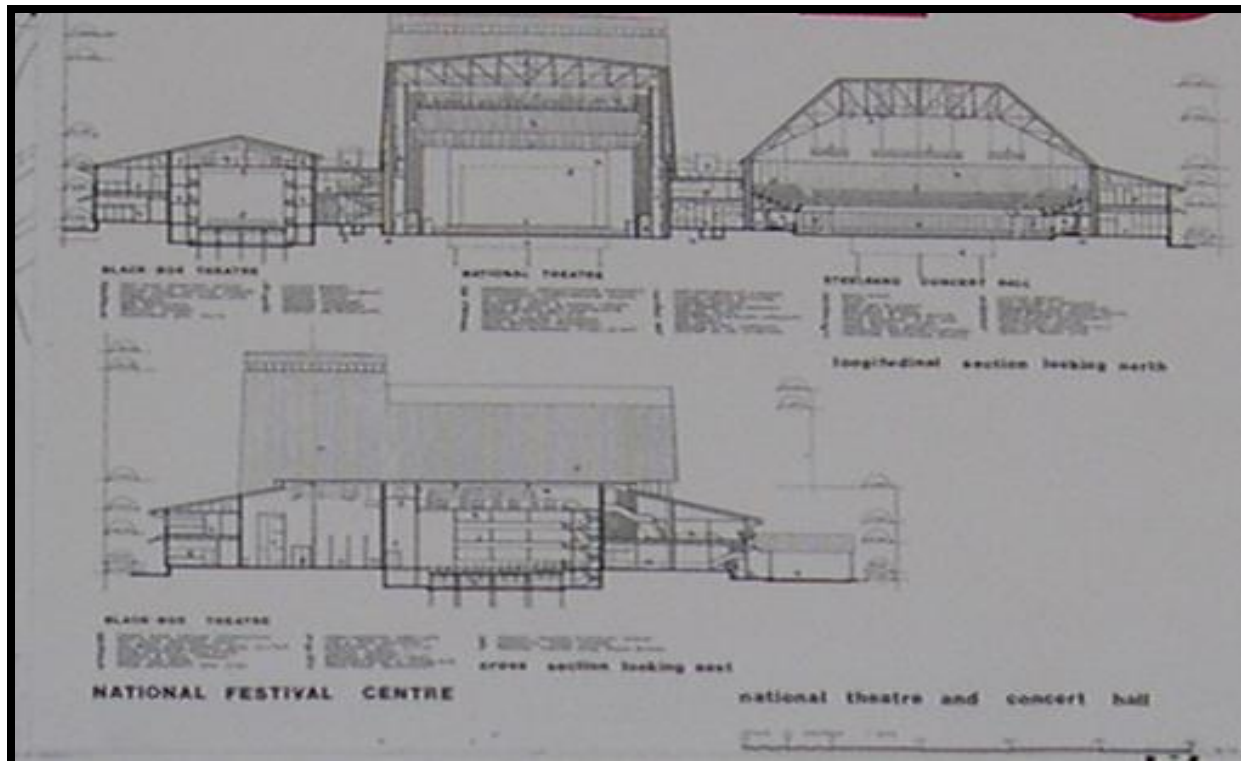
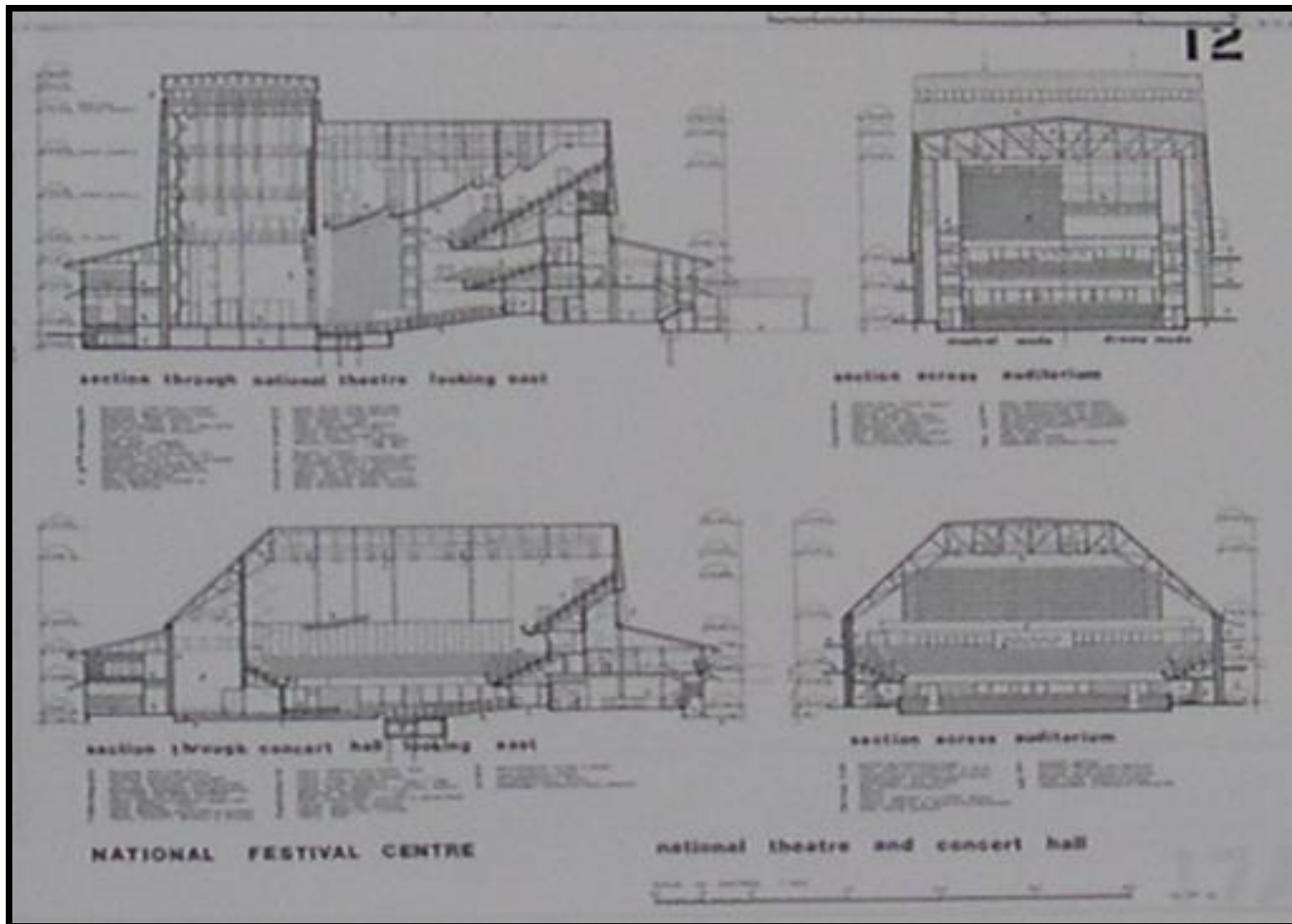
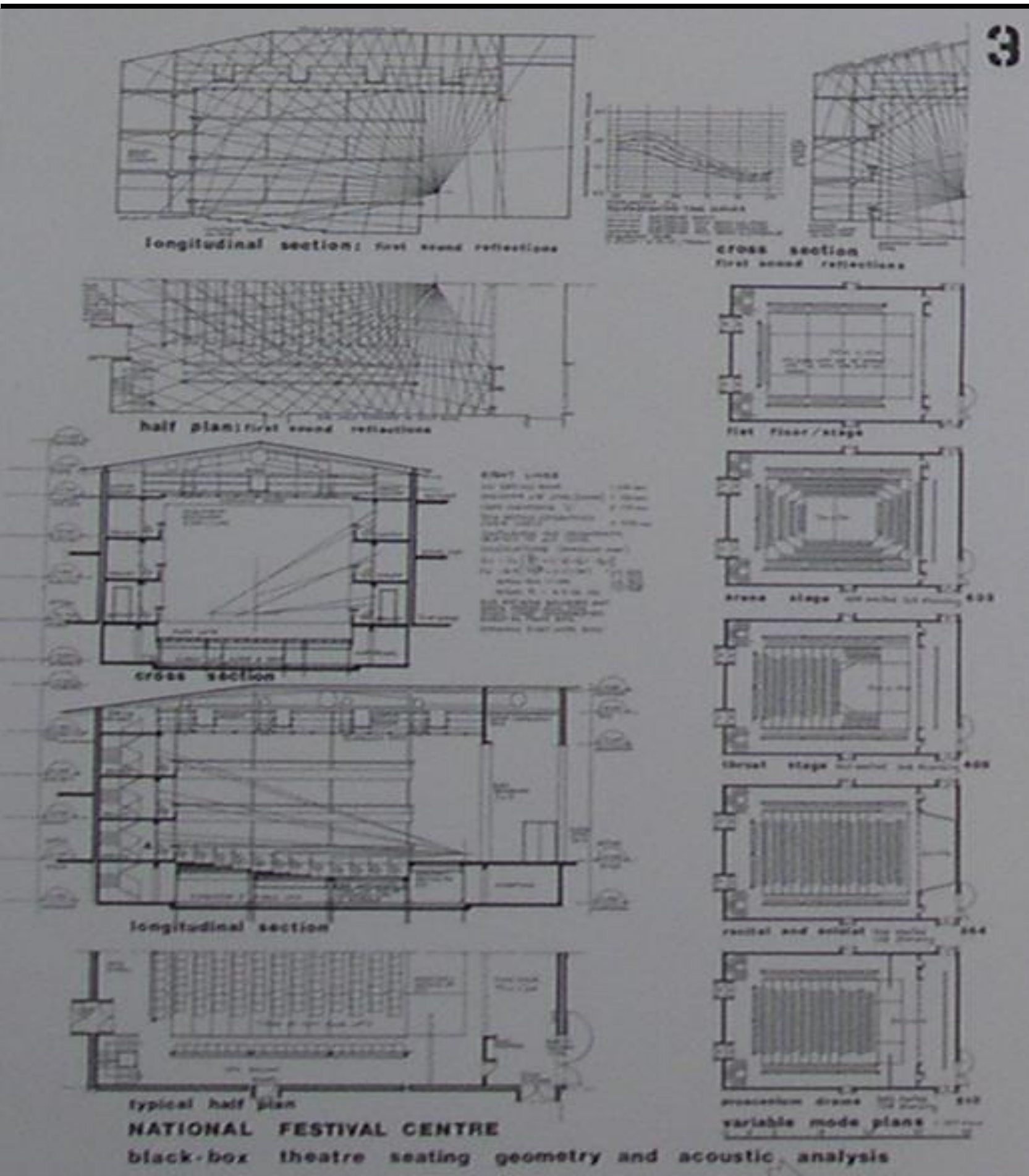
INTER-RELIGIOUS CENTRE UWI ST AUGUSTINE

NATIONAL FESTIVAL CENTRE 1990

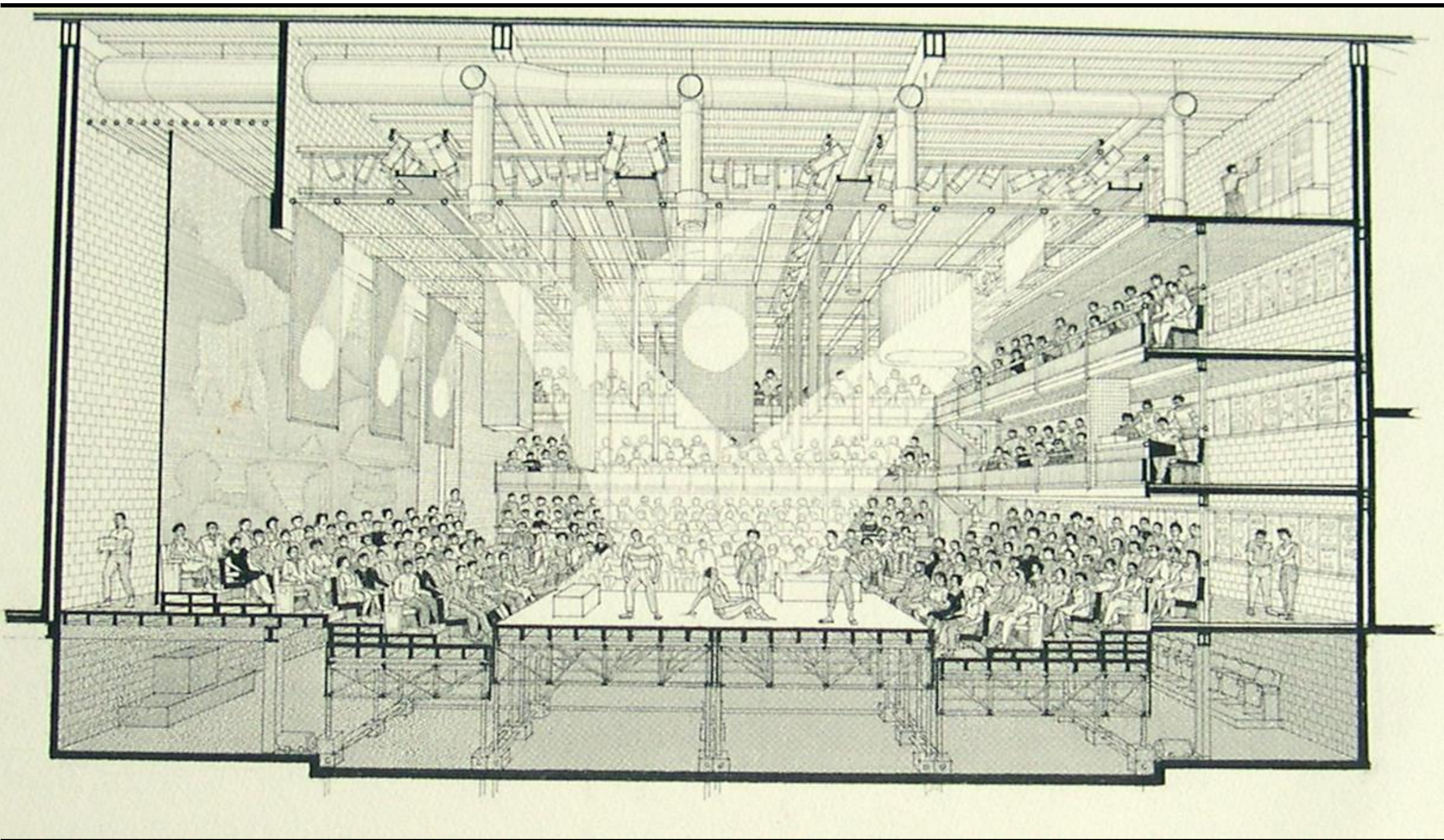


Competition

NATIONAL FESTIVAL CENTRE 1990

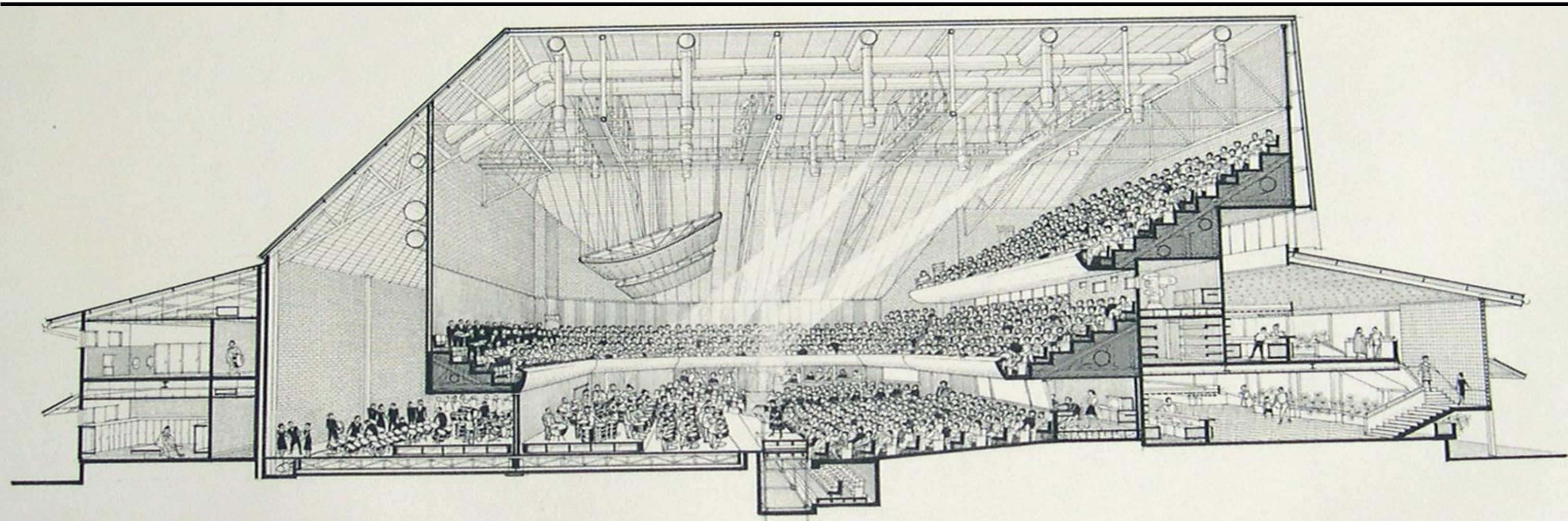


NATIONAL FESTIVAL CENTRE 1990



black · box theatre perspective section

NATIONAL FESTIVAL CENTRE 1990

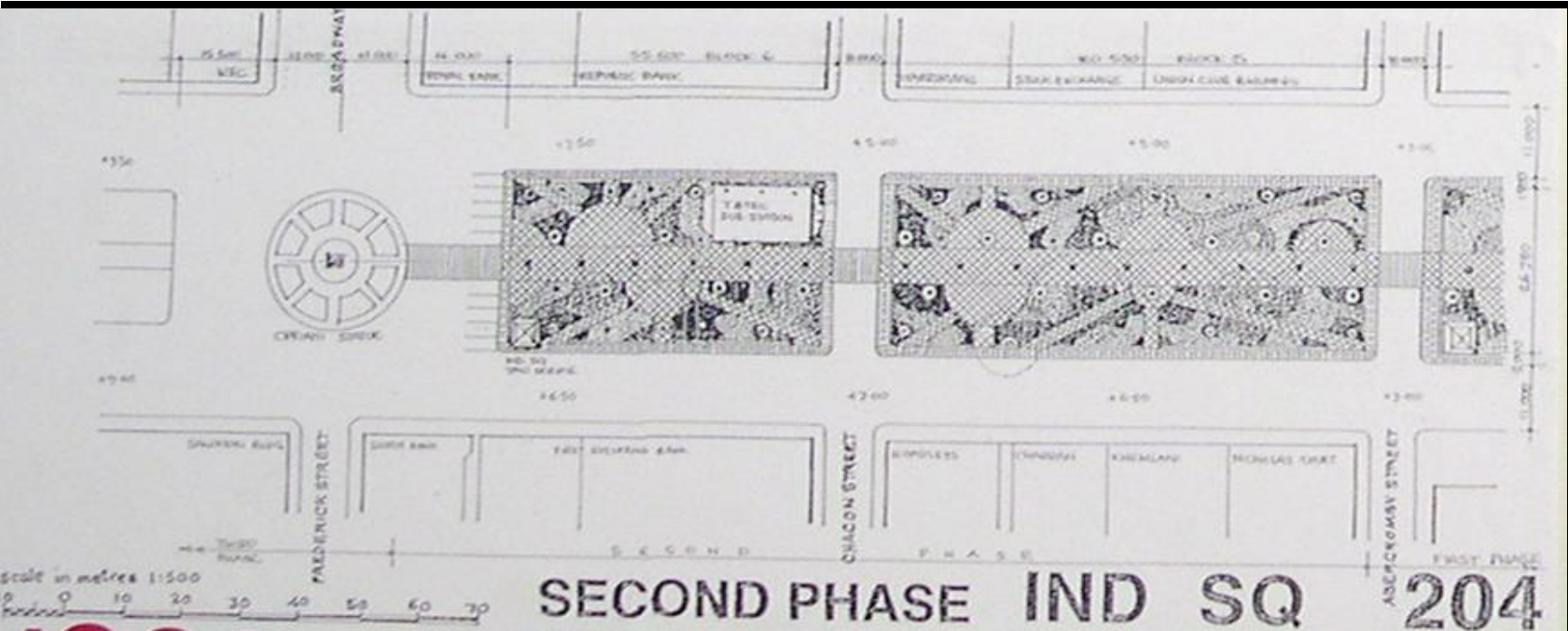
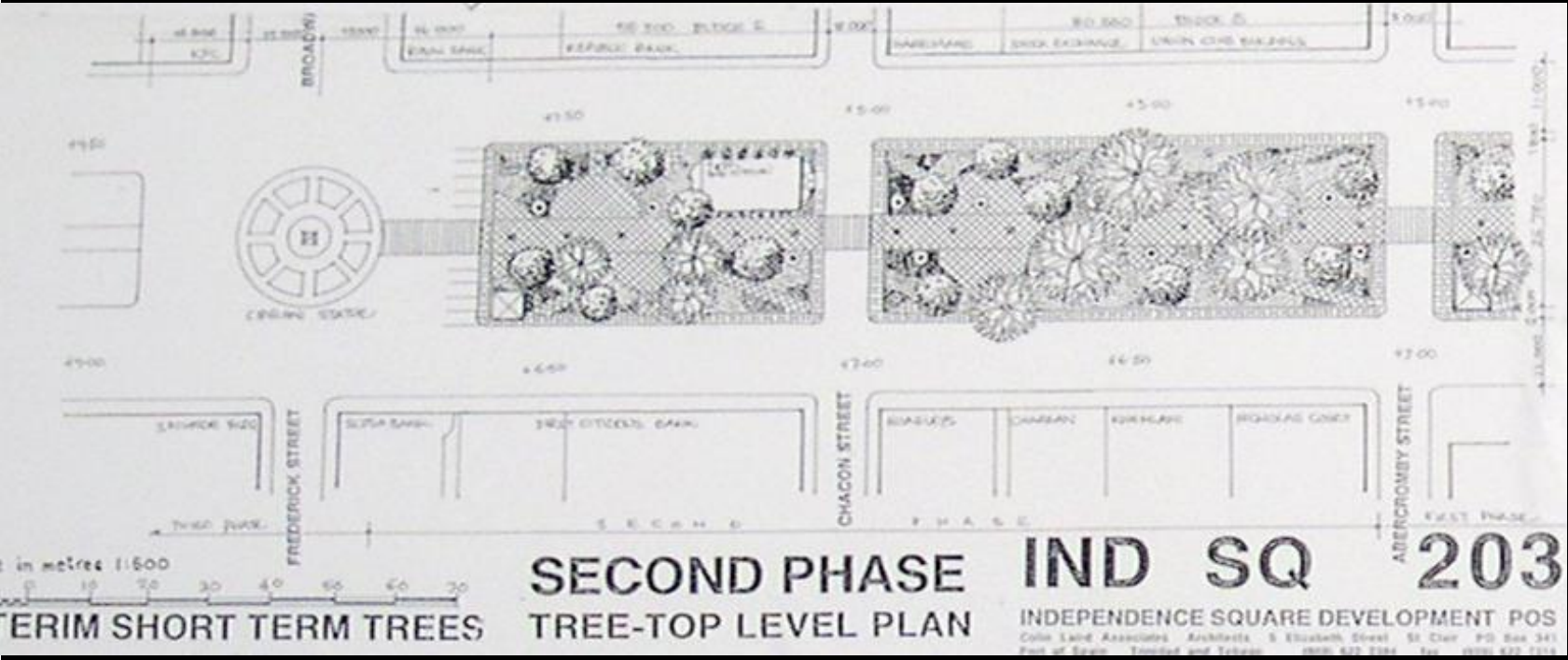


steelband concert hall perspective section

INDEPENDENCE



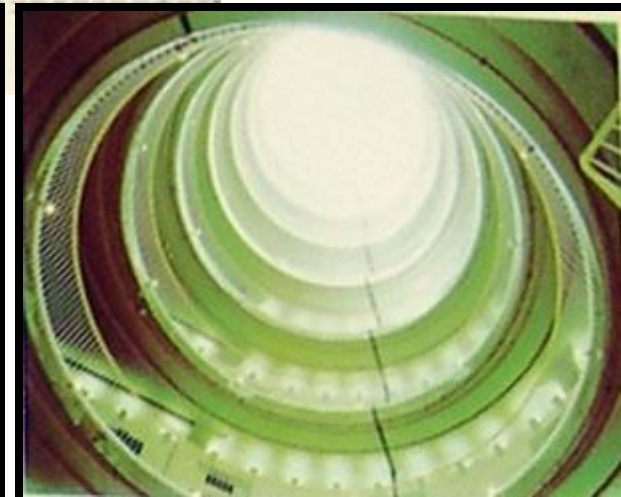
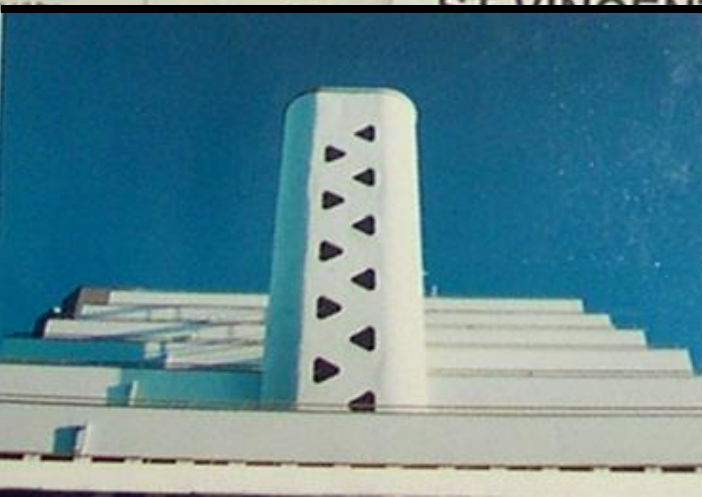
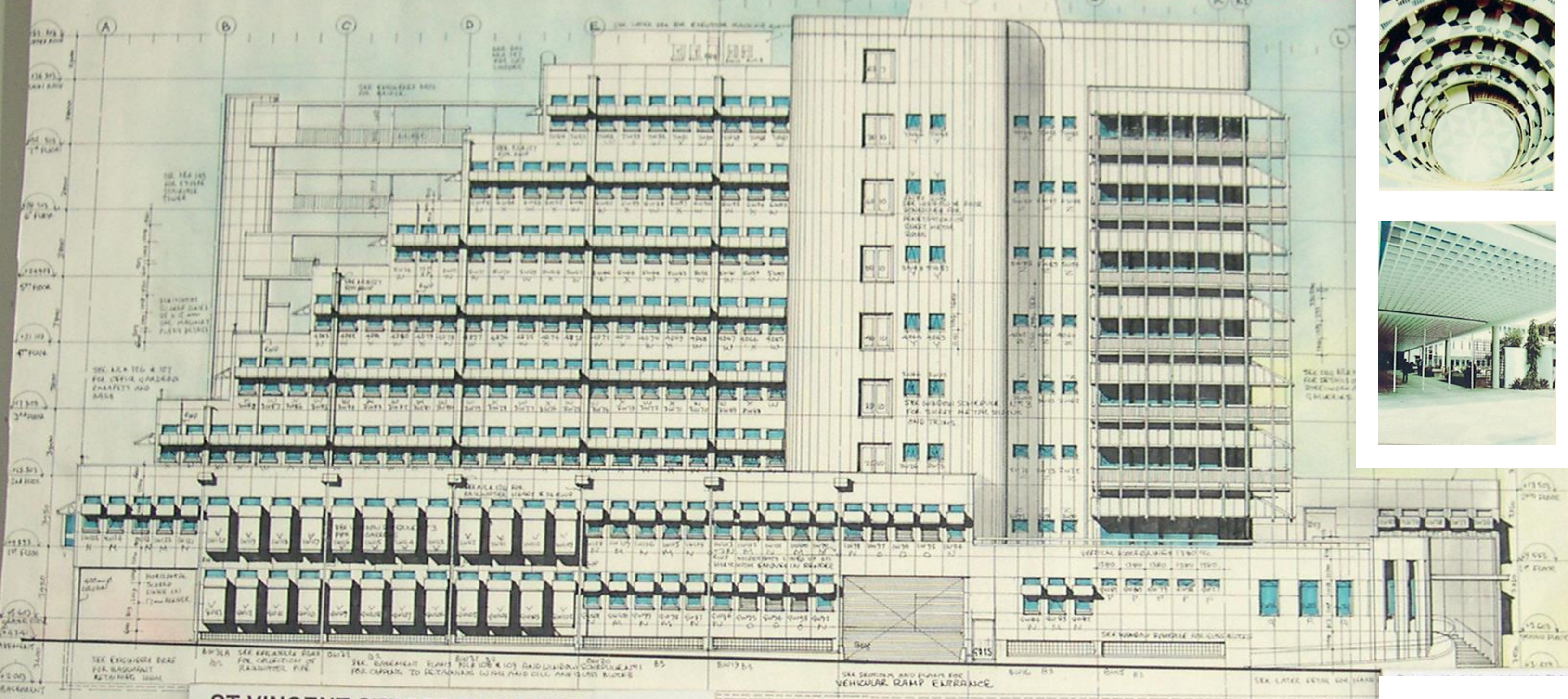
SQUARE



1993-1996 BRIAN LARA PROMENADE

NATIONAL LIBRARY

2003



NATIONAL LIBRARY 2003

